



Clinically Validated

TM-2441



TM-2440



The TM-2441 and TM-2440 are clinically validated and have been designed to meet the new ESH 2018 guidelines.

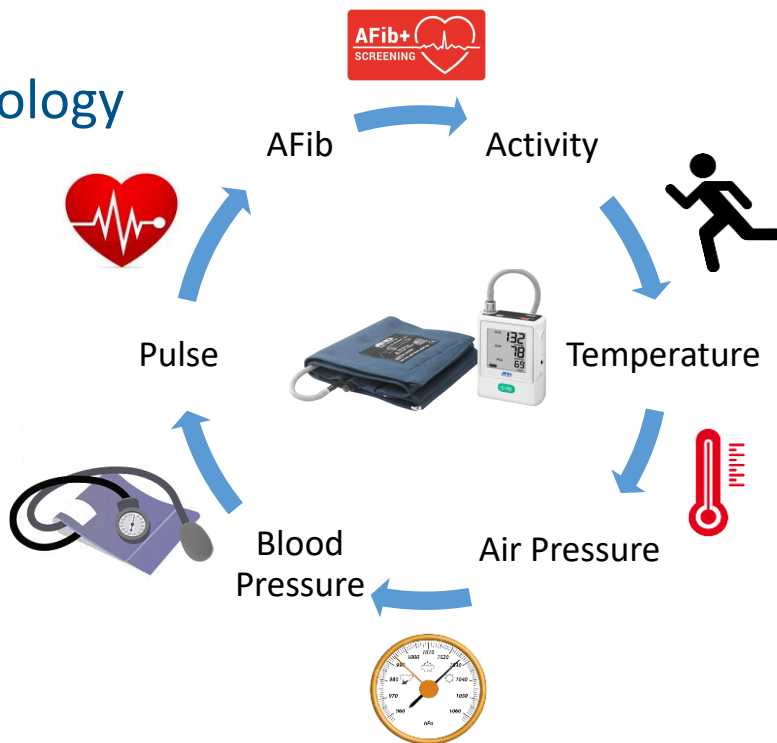
Being amongst the smallest and lightest Ambulatory Monitors available, the TM-2441 and TM-2440 are designed with the patient in mind.

With a focus on stroke prevention, these new models also benefit from A&D's unique AFib+™ 2 and SmartCheck™ technologies enabling screening for Atrial Fibrillation in a single reading.

PatientView 360 Multi-Sensor Technology

Offering an holistic 360° view of the patient

The TM-2441 is capable of providing additional supporting data for the clinician - this includes air temperature, atmospheric pressure and activity tracking using A&D's unique PatientView360™ technology.



TM-2441



CE 0123



The TM-2441 sets the new standard for ambulatory blood pressure monitoring, and comes with an impressive range of new features.

- 24-hour ambulatory blood pressure monitoring
- AFib+™ 2 - A&D's screening technology for Atrial Fibrillation
- SmartCheck™ - The ability to screen for Atrial Fibrillation in a single reading.
- PatientView360™ - The ability to provide clinicians with improved levels of information about the patient and the environment. This includes the recording of air temperature, patient activity and atmospheric air pressure data.
- Easy to use mode slide switch
- New pulse correction algorithm for faster measurement & noise rejection
- Battery Power (2 alkaline or Ni-Cd "AA")
- Output to data to analysis software (included with device)
- USB & BLE³ Connectivity
- Ingress protection IP22
- Protocol ISO810601
- Includes carry case and belt



▼Self measurement mode displays



LED display: This large display shows data from measurements in self-measurement mode. You can easily check the time until the next ABPM measurement in addition to values in self-measurement mode. There are also icons for battery level, Bluetooth status, AFib² detection, clock, mode and memory status.

TM-2440



CE 0123



A&D's TM-2440 is an entry-level model designed for ABPM measurement and comes with AFib+™ 2 as standard.

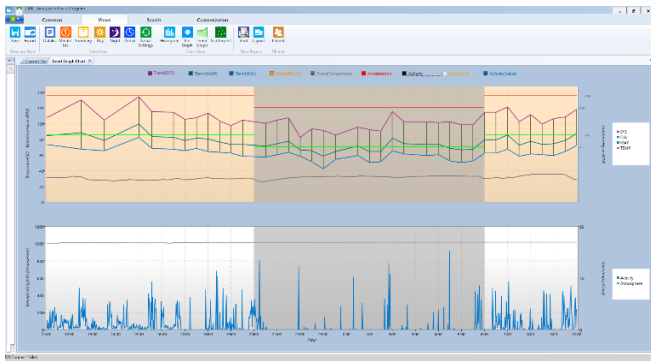
- 24-hour ambulatory blood pressure monitoring
- AFib+™ 2 - A&D's screening technology for Atrial Fibrillation
- SmartCheck™ - The ability to screen for Atrial Fibrillation in a single reading
- Light weight & compact size
120g*, 660 (w) x 245 (h) x 950 (d) mm *Without batteries
- OLED display (ABPM mode)
- New pulse correction algorithm for faster measurement & noise rejection
- Battery powered (2 alkaline or Ni-Cd "AA")
- Output of data to analysis software (included with device)
- USB & BLE³ connectivity
- Ingress protection IP22
- Protocol ISO810601
- Includes carry case and belt



JAPAN
Quality & Design

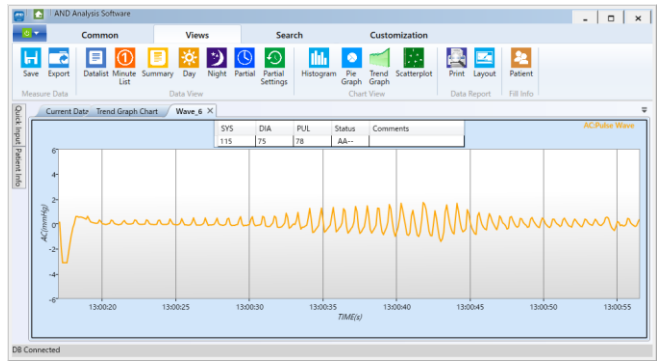
Analysis Software

▶ PatientView360™ multi-sensor data analysis with updated A&D software



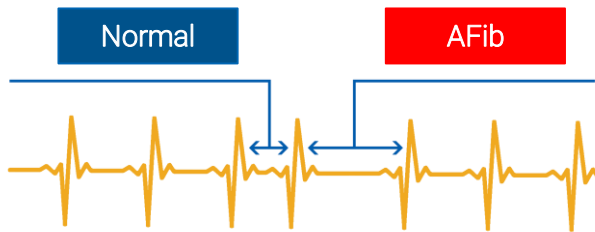
The newly designed software can analyze environmental data collected by the multi-sensor in addition to ABPM measurement data. Using A&D's new PatientView360™ technology, temperature, pressure and activity can be tracked alongside blood pressure.¹

▶ Recording and displaying waveform data



Both the TM-2440 and TM-2441 record blood pressure as an oscillometric waveform. With our new analysis software you can check the waveform record for each measurement. Quickly determine the accuracy of measured values.

100% Accurate Detection in a Single Measurement²



AFIB² symbol appears when the recorder detects an irregular heartbeat that differs $\pm 15\%$ from the average pulse rate.

System Requirements

Computer CPU: 1GHz or higher processor

Memory: 1GB or more (x86), 2GB or more (x64)

Operation System (recommended):

- Windows 10 (x86/x64)

- Windows 8 (x86), Windows 7 (x86/x64)

SVGA: Recommended 800x600 pixels or more

Disk: CD drive (drive corresponding to enclosed media)

Hard disk: Available space of 16GB or more (x86),

Available space of 24GB (x64)

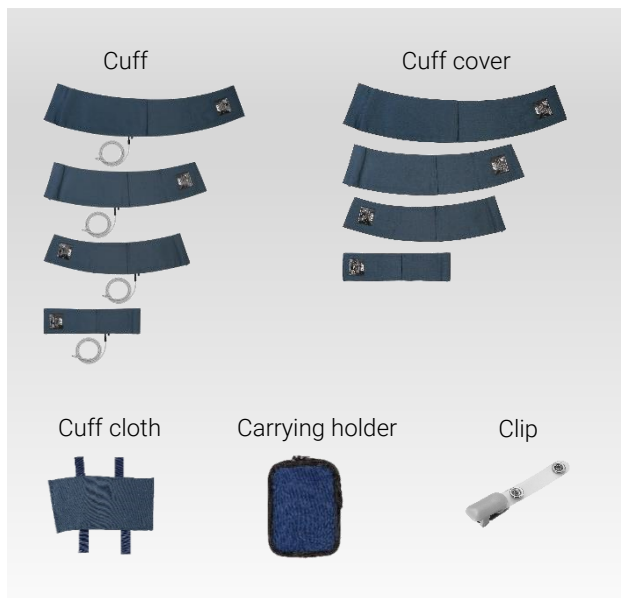
Printer: Environment in which XPS format files can be printed

1) TM-2441 only

2) Kabutoya T, Imai Y, Hoshide S, Kario K. Diagnostic accuracy of a new algorithm to detect atrial fibrillation in a home blood pressure monitor. J Clin Hypertens. 2017;19:1143-1147. <https://doi.org/10.1111/jch.13076>

3) SDK available for system integration

Accessories



Options

TM-CF502A	Extra large cuff for left arm (36-50cm)
TM-CF402A	Large cuff for left arm (28-38cm)
TM-CF302A	Adult cuff for left arm (20-31cm)
TM-CF202A	Small cuff for left arm (15-22cm)
TM-CF802A	Adult cuff for right arm (20-31cm)
TM-CF306A	Disposable cuff (10 sheets)
AX-133024503-S	Extra large cuff cover for left arm (10 sheets)
AX-133024663-S	Large cuff cover for left arm (10 sheets)
AX-133024500-S	Adult cuff cover for left arm (10 sheets)
AX-133024667-S	Small cuff cover for left arm (10 sheets)
AX-133024353-S	Adult cuff cover for right arm (10 sheets)
AX-133025103-S	Extra large cloth for left arm (2 sheets)
AX-133025102-S	Large cuff cloth for left arm (2 sheets)
AX-133024487-S	Adult cuff cloth for left arm (2 sheets)
AX-133025101-S	Small cuff cloth for left arm (2 sheets)
AX-133025104-S	Adult cuff cloth for right arm (2 sheets)
AX-133025104-S	Adult cuff cloth for right arm (2 sheets)
AX-133025995	Carrying holder
AX-110B-20-S	Clips (5 pieces)
AX-00044189	Belt

Specifications

	TM-2440	TM-2441
Measurement Method	Oscillometric measurement method	
Pressure detection method	Semiconductor pressure sensor	
Pressure display range	0 to 299 mmHg (299 mmHg or more is hidden)	
Measurement accuracy	Pressure: ± 3 mmHg Pulse rate: ± 5 %	
Minimum display division	Pressure: 1 mmHg Pulse rate: 1 beat / minute	
Measurement range	Systolic pressure: 60 to 280 mmHg Diastolic pressure: 30 to 160 mmHg Pulse rate: 30 to 200 beat / minute	
Pressurization method	Micro pump	
Automatic pressurization	85 to 299 mmHg	
Interval Setting	Intervals at each section which divides 24 hours to six parts at the maximum. Interval: OFF, 5, 10, 15, 20, 30, 60, 120 minutes	
AFib+™	Irregular Heart Beat and AFib ² screening technology	
SmartCheck™	AFib ² screening in a single reading	
PatientView360™		Multi-sensor technology providing clinicians with activity, air temperature and atmospheric pressure data
Display	A-BPM: OLED, 96 x 39 pixels, white characters	A-BPM: OLED, 96 x 39 pixels, white characters S-BPM: LCD, 40 x 50 mm, Display
Clock	24 hour clock	
Measurement count	200 times or more, varying due to measurement conditions	
Memory Data	600 data max	
Power supply	With the same type of batteries: 2 x 1.5V batteries (LR6 or AA size) Alkaline battery or Nickel-hydrogen battery (Ni-MH) 1900 mAh or more Backup battery for built-in clock: Lithium rechargeable coin cell battery ML2016	
Rated voltage	DC 2.4 V and DC 3.0 V	
Interface	USB: USB1.1 compliant Cable length: 1.5 m or shorter Micro-USB B type terminal can connect to dedicated peripheral (using standard driver software)	USB: USB1.1 compliant Cable length: 1.5 m or shorter Micro-USB B type terminal can connect to dedicated peripheral (using standard driver software) Bluetooth Ver.4.1 (BLE): Wireless device can be connected <i>SDK available for system integration</i>
Operating condition	Temperature: +10 to +40°C Humidity: 30 to 85 %RH (no condensation)	
Atmospheric pressure both for operation and storage condition	700 to 1060 hPa	
External Dimensions	Approx. 660 (w) x 245 (h) x 950 (d) mm	
Weight	Approx. 120 g (excluding batteries)	Approx. 135 g (excluding batteries)