

Omron Health Management Software

Bi-LINK

HEM-SOFT-IT2

Installation guide

Omron Health Management Software allows you to view, process and print data about blood pressure and walking steps measured by Omron's blood pressure monitor and step counter.

Note: This software is exclusive to Omron's blood pressure monitors and step counters.

Safety precautions

▲ Warning

- This is a CD-ROM disc. Do not play this disc on general audio players, DVD players or personal game devices. It may damage speakers of such devices and your eardrums.

Operating environment requirements

The following operating environments are required to run this software.

- Supported OS:** Microsoft® Windows® 2000 Professional
Microsoft® Windows® XP Home Edition
Microsoft® Windows® XP Professional Edition
- PC:** 600 MHz or higher, Pentium compatible CPU, PC/AT compatible machine
- Memory capacity:** 128MB or more
- Hard disc space:** 32MB or more
- Display:** Super VGA (800 x 600 pixel) or higher resolution video adapter and monitor
- Others:** A CD-ROM or DVD drive
USB connector (USB Revision 1.1 compliant)
A printer that can handle A4 documents (1440 x 720 dpi).
Microsoft® Internet Explorer 5.0 or higher
Adobe® Acrobat® Reader 5.0 or higher

Trademark and Registered trademark

- Microsoft and Windows are registered trademarks in the United States and other countries.
- Adobe, Adobe logo, Acrobat and Reader are registered trademarks or trademarks of Adobe Systems Incorporated in the United States and other countries.

1. Preparation

- To install Omron Health Management Software onto your PC, you must have administrative rights.
- Quit all applications currently running before you install the software.
- When using anti-virus software, disable anti-virus software before installation. It may interfere with the set-up program of this software. Enable the above software again after installation is complete.

2. Installing the software

1. Insert the installation CD-ROM disc into the CD drive of your PC.

If no screen appears

[Windows 2000]

- i) Click [My Computer] and double-click the CD drive in which the CD-ROM disc is inserted.

- ii) When folder names of the CD-ROM are listed, double-click the [setup.exe] icon.

[Windows XP]

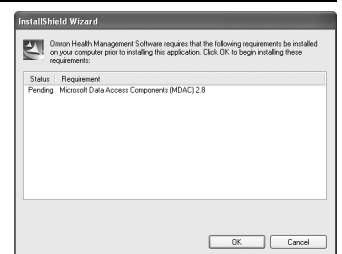
- i) Click [My Computer] from the start menu.

- ii) From the [My Computer] screen, double-click the CD drive in which the installation CD-ROM disc is inserted.

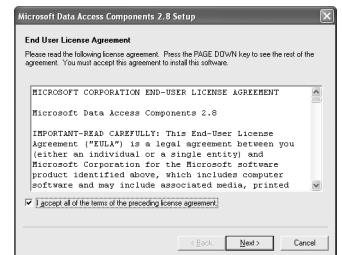
2. The installation screen of Microsoft Data Access Components (MDAC) appears.

Click [OK].

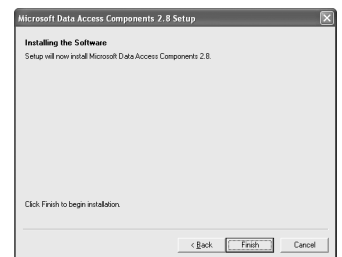
If this screen does not appear, skip to Step 5.



3. Select the checkbox [I accept ...], and click [Next].

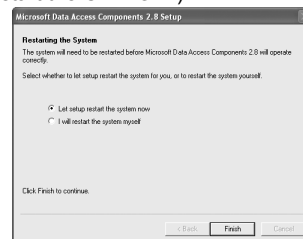


4. Click [Finish].



Notes:

- Then, this screen appears when your PC must be restarted. Select the checkbox [Let setup restart the system now], and click [Finish]. Your PC will restart. After restart, start the CD-ROM. (Refer to Step 1 for how to start the CD-ROM.)

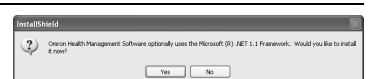


- When restart is unnecessary, [Setup is complete] appears. Click [Close].

5. The installation screen of the .NET Framework 1.1 appears.

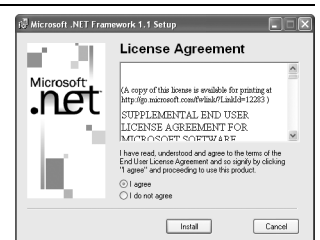
Click [Yes].

Note: If this screen does not appear, skip to Step 8.



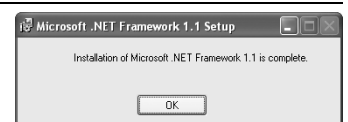
6. Microsoft .NET Framework 1.1 License Agreement appears. Read the License Agreement thoroughly and if you agree with it, select [I agree] and click [Install].

Note: The program will not be installed if you disagree with the License Agreement.



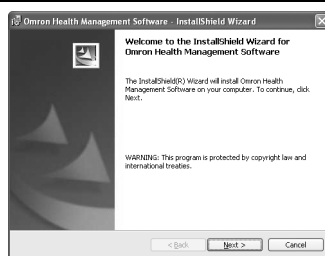
7. The dialogue box appears that informs the Microsoft .NET Framework 1.1 installation is complete.

Click [OK].



8. The software installation guide screen of Omron Health Management Software appears.

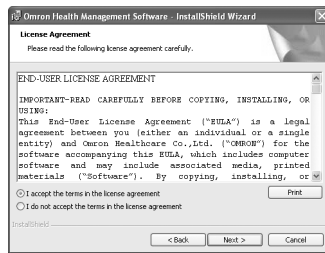
Click [Next >] to continue installation.



9. The License Agreement of Omron Health Management Software appears.

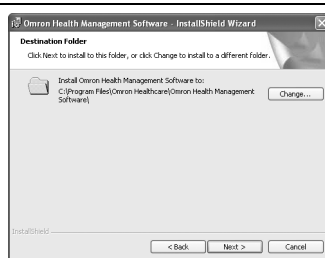
Read the License Agreement thoroughly and if you agree with it, select [I accept the terms...] and click [Next].

Note: The program will not be installed if you disagree with the License Agreement.

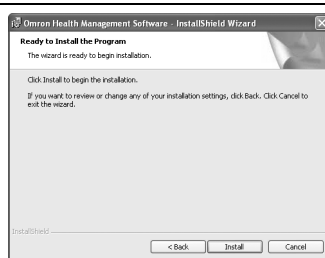


10. The installation folder selection screen appears. Check the installation destination folder, and click [Next >].

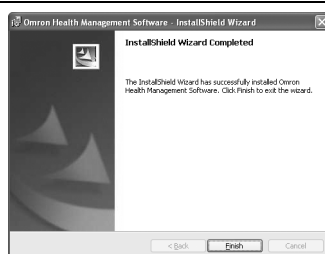
Note: To change the installation destination, click [Change...] and select a folder for installation. Then click [Next >].



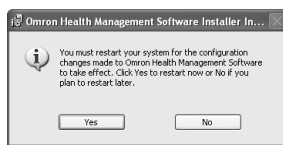
11. The installation confirmation screen appears. To continue installation, click [Install].



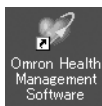
12. The [InstallShield Wizard Completed] screen appears. Click [Finish].



Note: In case following screen appears your PC must be restarted. Click [Yes] to restart your PC.



13. The [Omron Health Management Software] short-cut icon is created on your desktop. Also there will be a short-cut on the desktop with a PDF-file containing Omron Health Management Software Users Manual.

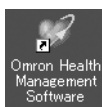


14. Remove the CD-ROM disc from the CD drive.

3. Using the software

Note: For detail functions: Double-click [Omron Health Management Software Users Manual.pdf] short-cut on desktop, or click [Help] in this software after starting up.

1. Double-click the [Omron Health Management Software] short-cut icon on the desktop. If no icon appears on the desktop: From the [Start] menu, select [All programs] or [Programs] [Omron Health Management Software], and click the [Omron Health Management Software] short-cut.



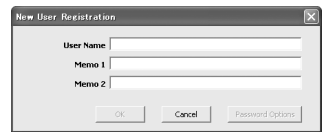
2. If you are using Omron Health Management Software for the first time, click [Add User] on the [User Management] screen.



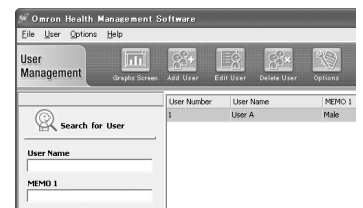
3. In the [New user] box, enter a user name (e.g. omron) and click [OK].

Note:

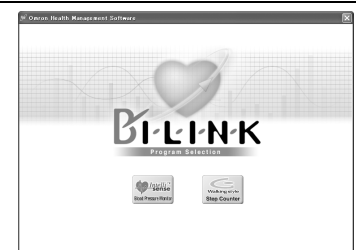
- Omron Health Management Software can manage multiple users' data. Data is controlled by user name.
- The number of users who can register for this software varies depending on the amount of free disc space in your PC.
- The user name shall be up to 28 characters.



4. Click the user name, and click [Graph Screen].



5. Click either the [Blood Pressure Monitor] or [Step Counter] icon.



4. Troubleshooting tips

| Problems | Cause | Corrective actions |
|---|--|---|
| The installation program has no access rights to the directory [Installation Destination]. The installation has been cancelled. Log in as an Administrator or contact your system administrator for assistance. | The logged in user does not have Administrator rights. | Log in as an Administrator for installation. |
| Either the Windows 2000 or Windows XP operating system is required to install Omron Health Management Software onto your PC. | Either the Windows 2000 or Windows XP operating system is required to install Omron Health Management Software onto your PC. | You cannot run this program on your PC. Install Omron Health Management Software onto a PC on which the corresponding operating system is running as listed in [Operating environment requirement]. |
| Omron Health Management Software cannot be installed onto a PC if there is less than 32MB of free disc space. | The amount of free disc space is insufficient to install Omron Health Management Software. | Increase the amount of free disc space or install the software onto another hard disc. |