

# Software Setup & Quick Start Guide

## The New Vantage *Plus* Digital Indirect Ophthalmoscope



Keeler

## Table of Contents

Customer Notice .....	4
Specification .....	4
MINIMUM PC REQUIREMENTS .....	4
Hardware Setup Guide .....	6
Quick Start Guide .....	7
Introduction .....	7
Software Setup.....	8
Introduction .....	8
Installation steps.....	8
Install Vantage camera for Windows 7.....	14
Install Vantage camera for Windows XP .....	14
Software configuration.....	21
Setup Videology camera properties.....	21
Software re-installation.....	24
Introduction .....	24
Reinstallation .....	24
All About Debut Video Capture .....	28
Introduction .....	28
Debut Video Capture Software Professional .....	28
Webcam, Device .....	28
Snap-Shot .....	29
Recordings (Ctrl + L Button on the Keyboard) .....	29
Record (F5 Button on the Keyboard) .....	29
Pause (F6 Button on the Keyboard).....	29
Stop (F7 Button on the Keyboard) .....	29
Video File Format.....	30
Encoder Options .....	30
Setting up your Accessories .....	31
Remote or Foot Switch .....	31
Introduction .....	31
Troubleshooting Guide.....	38
When I record an image, it's very shaky and I get jitters... ..	38

---

When I install the camera, its Installed as a "USB 2820" device .....	39
When I reinstall the program from disc, the windows operating system asks to restart computer. What can I do for it? .....	40
I plugged in the camera, but an error message shows no camera has been detected. What can I do? .....	41
What can I do for the error message "An error occurred attempting to install Keeler Vantage Digital"? .....	41
Default Software Settings. ....	43
How and Where to make the Changes? .....	43
Camera Feature Control .....	43

## Customer Notice

**WE HIGHLY RECOMMEND YOU READ ALL SETUP INSTRUCTION PRIOR TO STARTING INSTALLATION!**

## Specification

Make sure your PC/Laptop meets our minimum hardware requirements; a specification PC/Laptop lower than that which has been specified may result in poor performance.

### MINIMUM PC REQUIREMENTS

**CPU: Intel Core 2 Duo 2.33GHz or higher**

**Memory: 1GB RAM or higher**

**USB Port: 2.0**

**Operating System: Microsoft Windows XP Service Pack 2 or higher, Windows 7 32-bit Or 64 bit**

**Hard Disk Speed: 5400 rpm or higher**

**Direct X 9.0c or later**

**NOT SUPPORTED BY WINDOWS VISTA**

### Example Specification Machines; Dated as of 11/09/2008

Dell Precision M4300 Laptop

CPU: Intel Core 2 Duo 2.40GHz

Memory : 1 GB RAM or Higher

USB Port: 2.0

Operating System: Windows XP Professional

Hard Disk Speed:5400 rpm

Direct x9.0c

Dell Optiplex 330 Desktop

CPU: Intel Core 2 Duo 2.33GHz

Memory : 2 GB RAM or Higher

USB Port: 2.0

Operating System: Windows XP Professional

Hard Disk Speed:7200 rpm

Verify your system has the latest USB 2.0 host driver from Microsoft® only. Verify that your USB host controller chipset is Microsoft certified. This product is not guaranteed to operate with a USB 2.0 host driver from OWC.

**Important: Laptop/Notebook users are highly recommended to plug the laptop to the mains power supply whilst using the hardware, failure to do so may result in poor performance.**

**IMPORTANT: PICK ONE DEDICATED USB PORT TO INSTALL THE CAMERA ON. PLUGGING THE CAMERA INTO A DIFFERENT USB PORT WILL RESULT IN DRIVERS HAVING TO BE RE-INSTALLED.**

## **WARNING:**

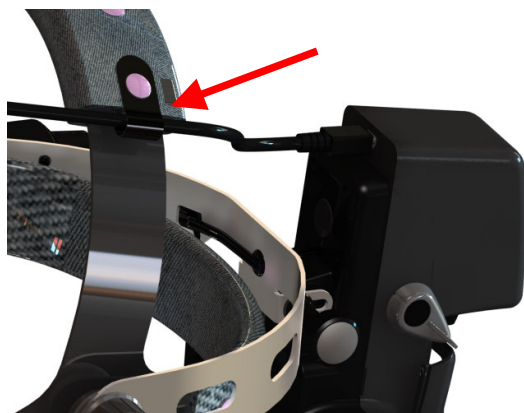
1. **Range of application: The Keeler Vantage Plus Digital Indirect Ophthalmoscope is used exclusively for eye examination, particularly retinal examination. A video image of the eye is shown on a screen/monitor.**
2. **Use only power sources which are designed for use in medical applications. This also applies to any accessories and the monitor used with the system.**
3. **This manual is only available for the setup of the Keeler Vantage Plus Digital Indirect Ophthalmoscope.**
4. **The information in this document is subject to change without notice.**
5. **Keeler Ltd assumes no responsibility for any data errors in this document or the software described in this document.**
6. **Keeler Ltd assumes no responsibility for any data corruption caused by a hardware accident, disk crash, windows system malfunction, or misuse.**
7. **Keeler is not responsible for the malfunctioning of the personal computer, installation of other software, or updates of the operating system or other software.**
8. **Keeler assumes no responsibility for misuse or malfunction of the device/accessories supplied.**
9. **The specifications of this system are subject to change.**
10. **Regularly backup your stored images. Keeler is not responsible for lost or corrupted data due to problems with the hard drive.**

## Hardware Setup Guide

The following items are required to complete the hardware setup:

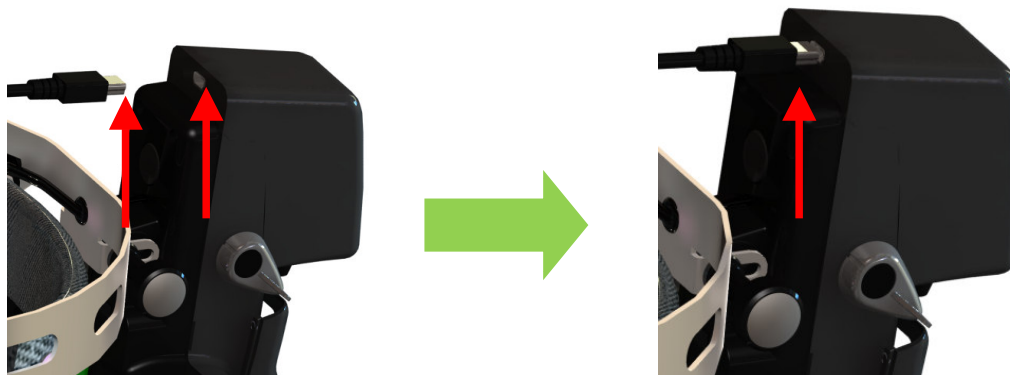
- 1 x Vantage Plus Digital Ophthalmoscope
- 1 x 5 meter USB cable

1. Begin by unwrapping the items list above from your kit to begin the hardware setup.
2. Feed the mini USB cable (the smaller of the two ends) through the cable holder by un-buttoning it and feeding the cable through and buttoning it back up as shown in **Figure 1**



**Figure 1**

3. Next Plug the mini USB cable into the mini USB socket as shown in **Figure 2**



**Figure 2**

4. Hardware setup is now complete; you are now ready to start the software setup.

## Quick Start Guide

### Introduction

This is a very quick guide to getting your camera up and running, for more a detailed overview on how to get your camera up and running please refer to the section entitled "Software & Driver Setup"

Ready set.. and go!!

1. **DO NOT PLUG IN THE CAMERA UNTIL PROMPTED TO DO SO!!**
2. Insert CD
3. The setup program will auto run. If not, run "Setup.exe" program from CD manually.
4. Plug the camera into the USB port **WHEN** prompted to do so.
5. You're done!!

### NOTE:

- **"Videology" Viewer Software is just viewing software; it carries no functionality for recording or taking still pictures.**
- **"Debut Capture Software Professional" carries the facility to capture video recording and still images.**

## Software Setup

### Introduction

Below is a step by step guide for installing the required software to run the Vantage Plus Digital Indirect Ophthalmoscope. Follow each numbered step carefully.

The installation for Windows XP and Windows 7 are similar. The following steps are applied to both operating systems if not specified.

### Installation steps

1. Insert the Installation disc provided into your pc.
2. The CD will auto run. If not, run "Setup.exe" program from CD manually.
3. A new window "Keeler Vantage Digital" window will appear as shown in **Figure 3**. Click on "Next" as indicated by the red circle. Continue click "Next" to **Figure 4, and Figure 5**,

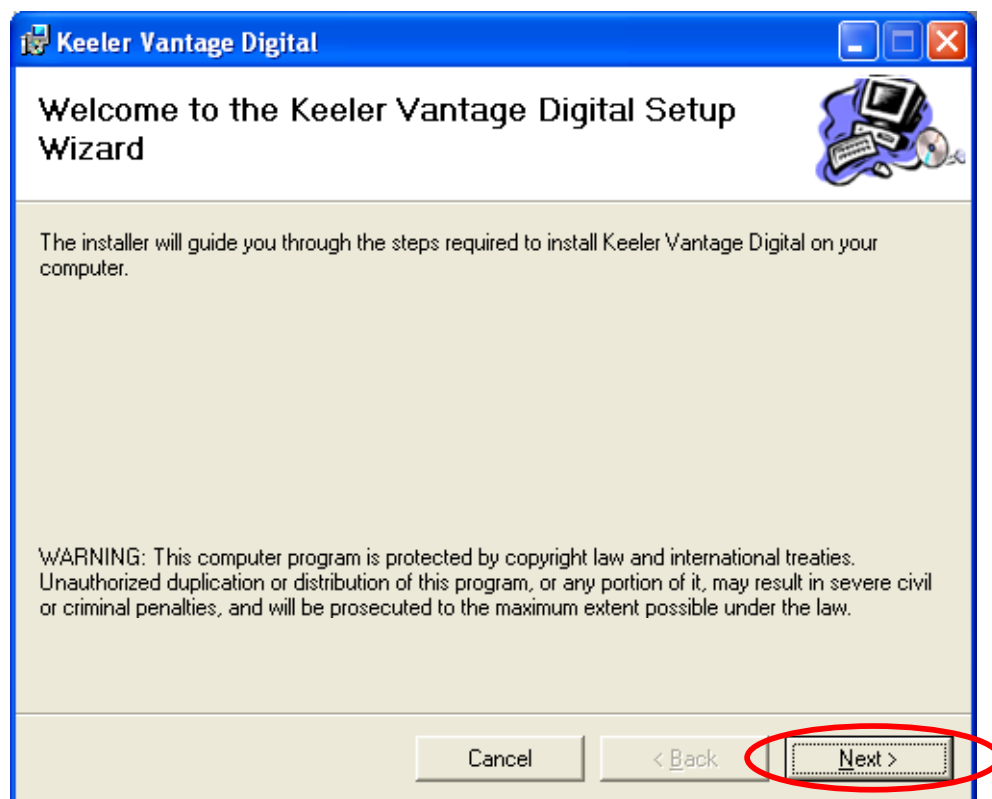


Figure 3



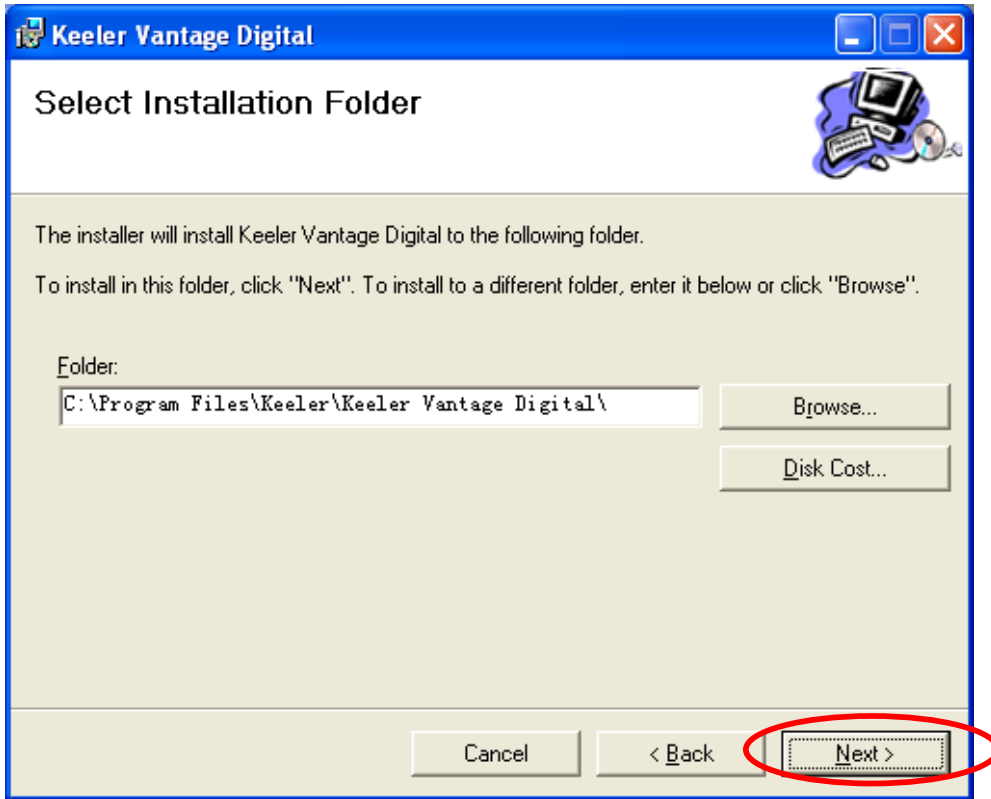
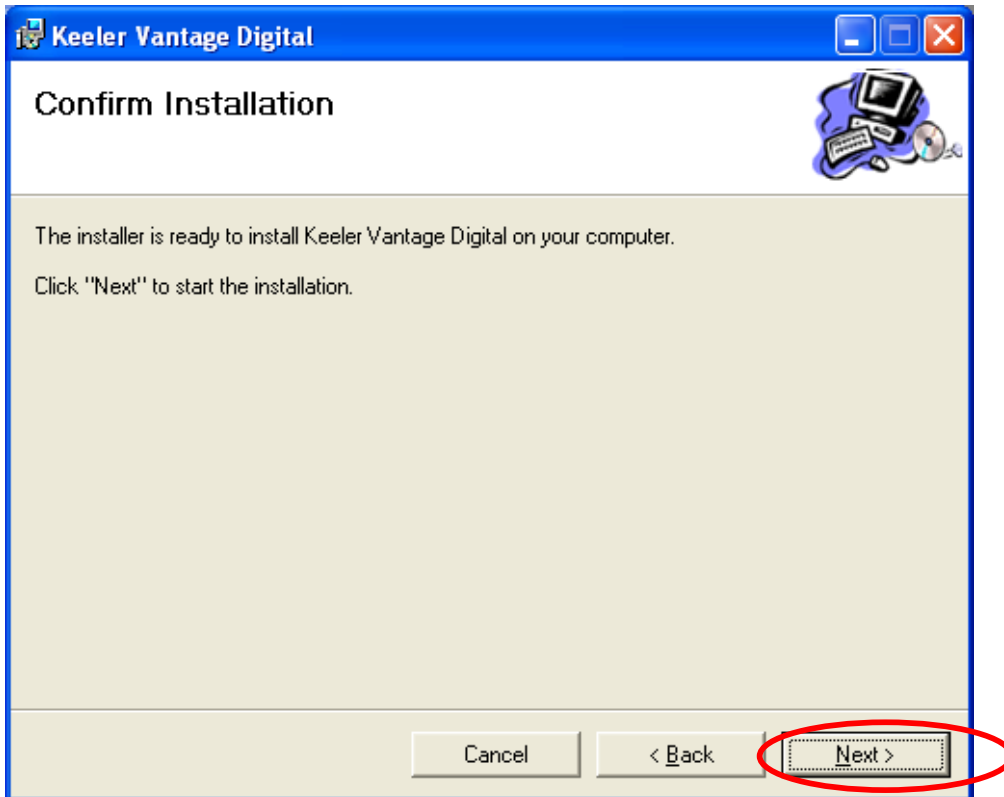
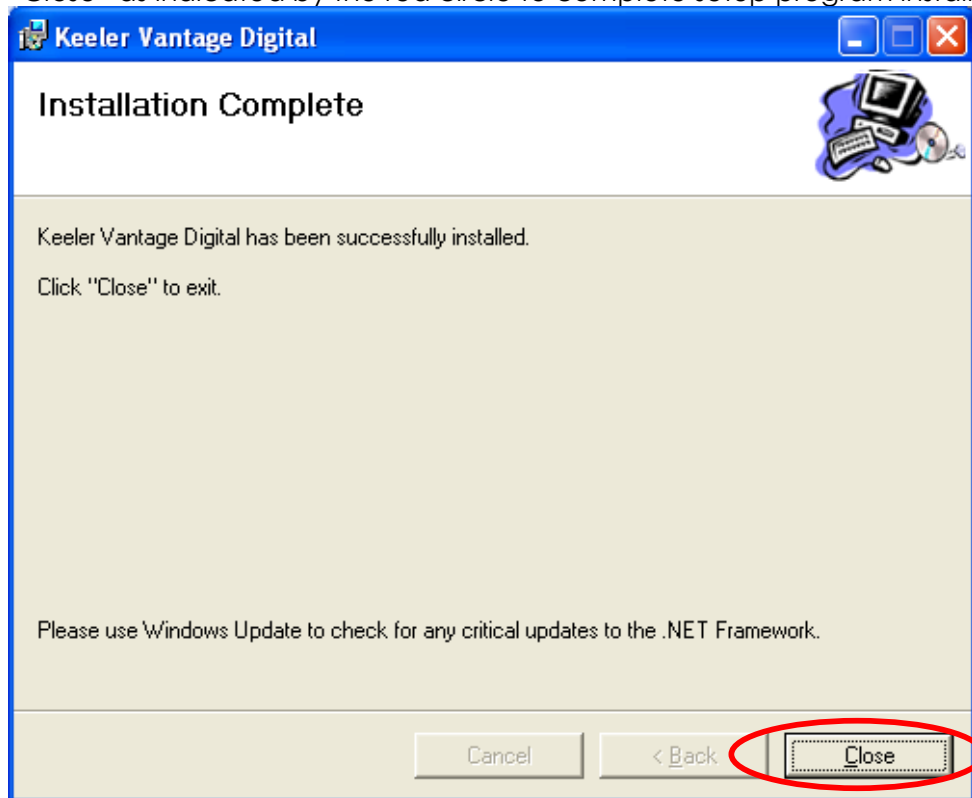


Figure 4.

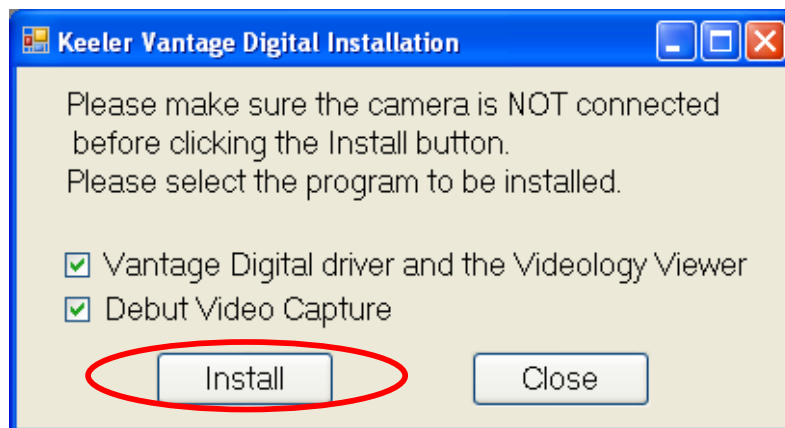


**Figure 5**

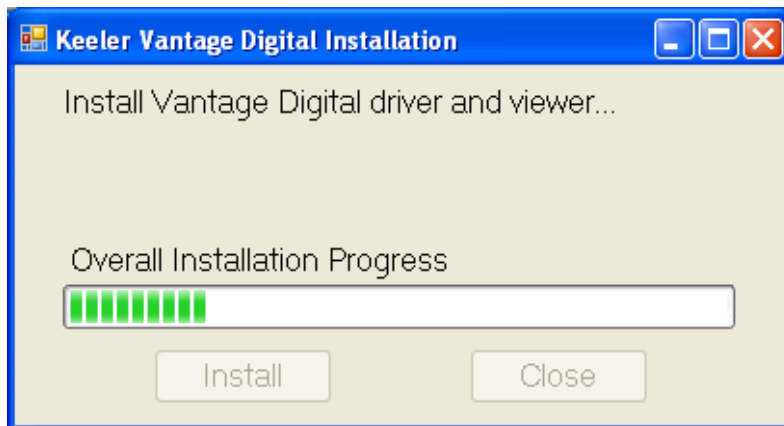
4. An installation complete window will appear as shown in **Figure 6**. Click on "Close" as indicated by the red circle to complete setup program installation.

**Figure 6**

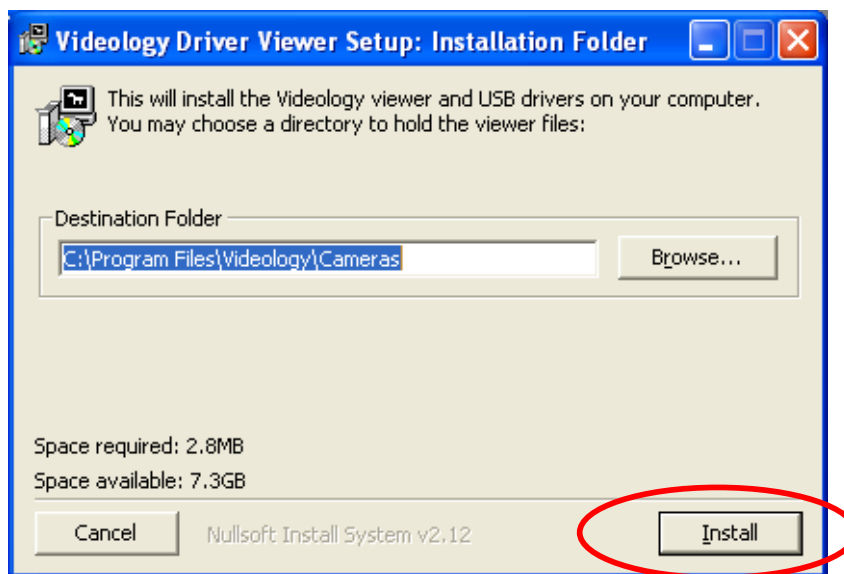
5. A new window "Keeler Vantage Digital Installation" appears as **Figure 7**. Please read the instruction carefully in "Keeler Vantage Digital Installation" window and following the instruction to complete the installation. Click "Install" to next step.

**Figure 7**

6. The information on “Keeler Vantage Digital Installation” window changed as **Figure 8**. A new window “Videology Driver Viewer Setup: Installation Folder” appears as **Figure 9**. Click “Install” to next step.

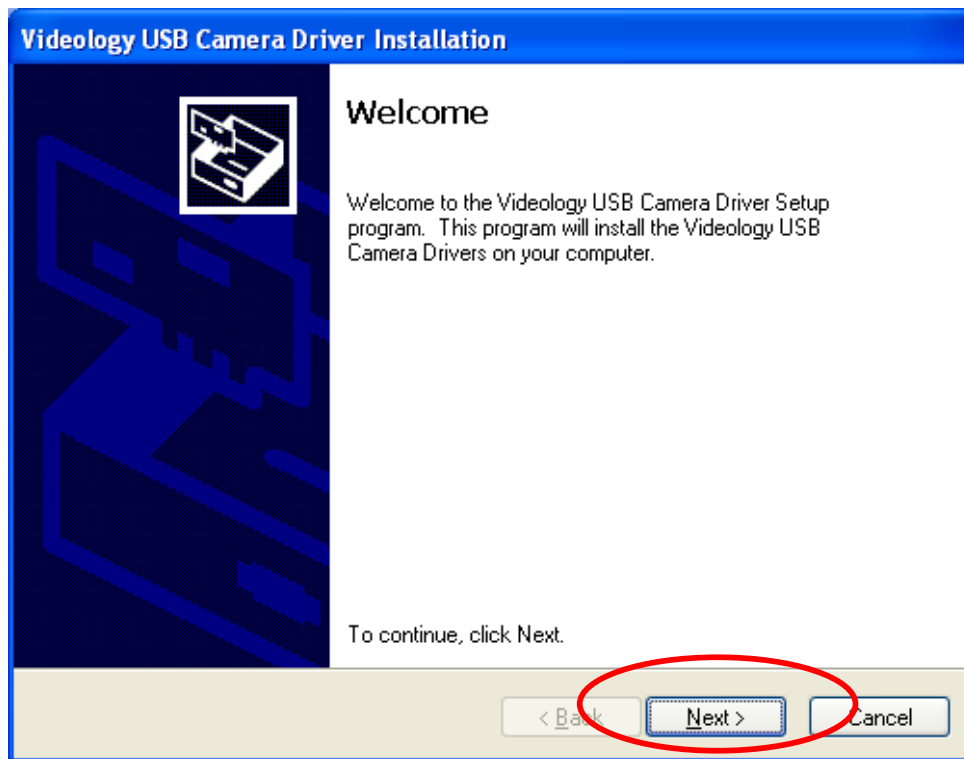


**Figure 8**



**Figure 9**

7. A new window “Videology USB Camera Driver Installation” appears as **Figure 10**. Click “Next” to continue.



**Figure 10**

8. For Windows XP, a new window will pop up namely "Software Installation" as shown in **Figure 11A**. Click on "Continue Anyway" as indicated by the circle.

For Windows 7, a new window will pop up namely "Windows Security" as shown in **Figure 11B**. Click on "Install" as indicated by the circle.

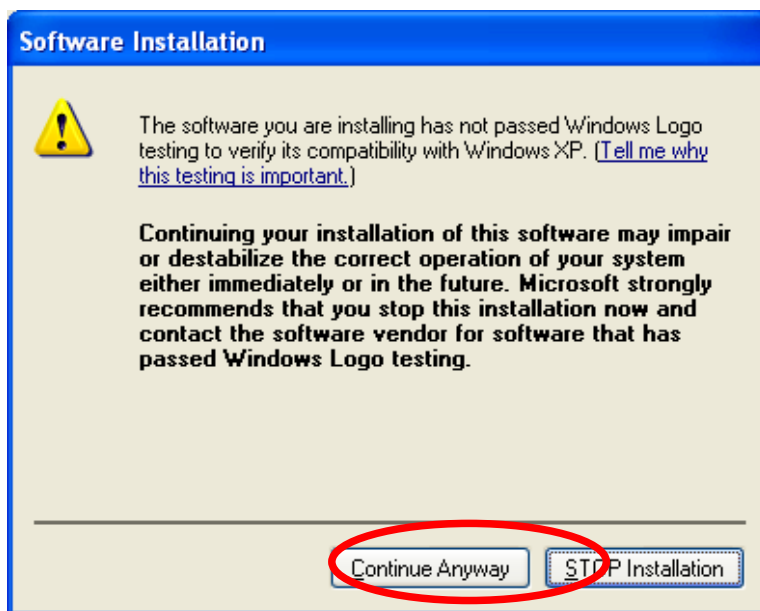


Figure 11A

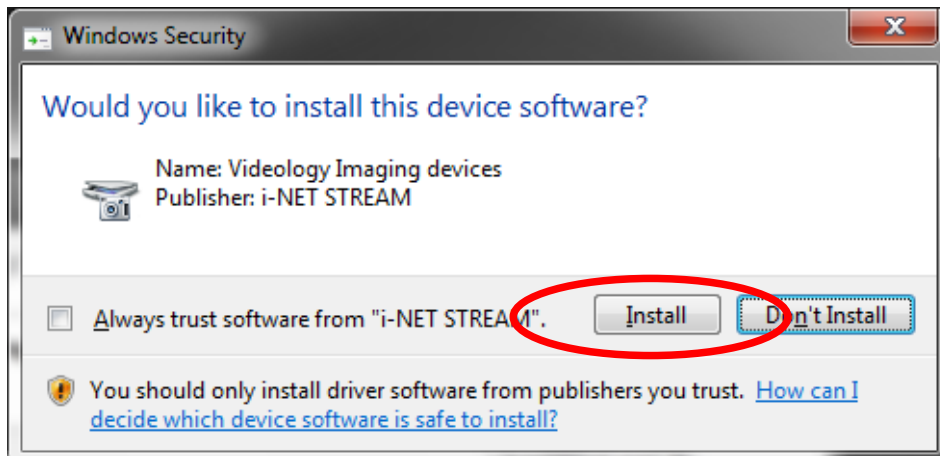


Figure 11B

9. The "Videology USB Camera Driver Installation" window changed as **Figure 12**. Click "Finish" to continue.

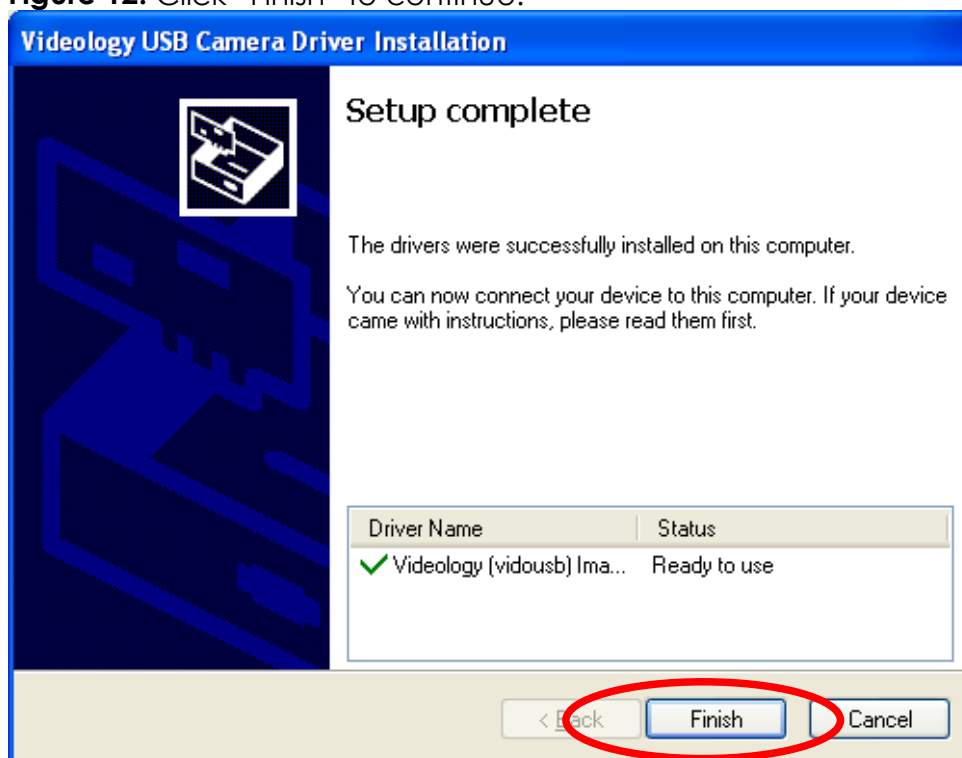
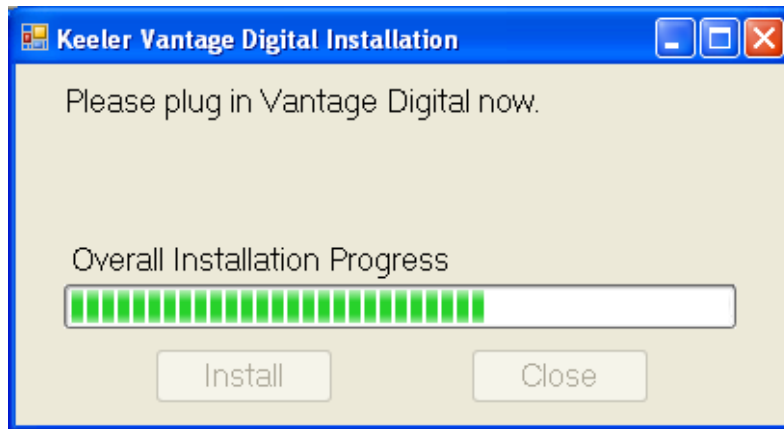


Figure 12

10. The "Keeler Vantage Digital Installation" window changed as **Figure 13**. Please plug in Vantage Digital now to install Videology camera. The installation steps for Videology camera are different between Windows XP and Windows 7. Select the related steps based on your operating system.



**Figure 13**

#### Install Vantage camera for Windows 7

11. A new popup window appears as **Figure 14**. Click "Yes" to continue after plugged in the camera. Please go to step 15.



**Figure 14**

#### Install Vantage camera for Windows XP

12. A new pop up window "Found New Hardware Wizard" appears as **Figure 15**. Check "Install software automatically (Recommended)" and click on "Next" to continue.

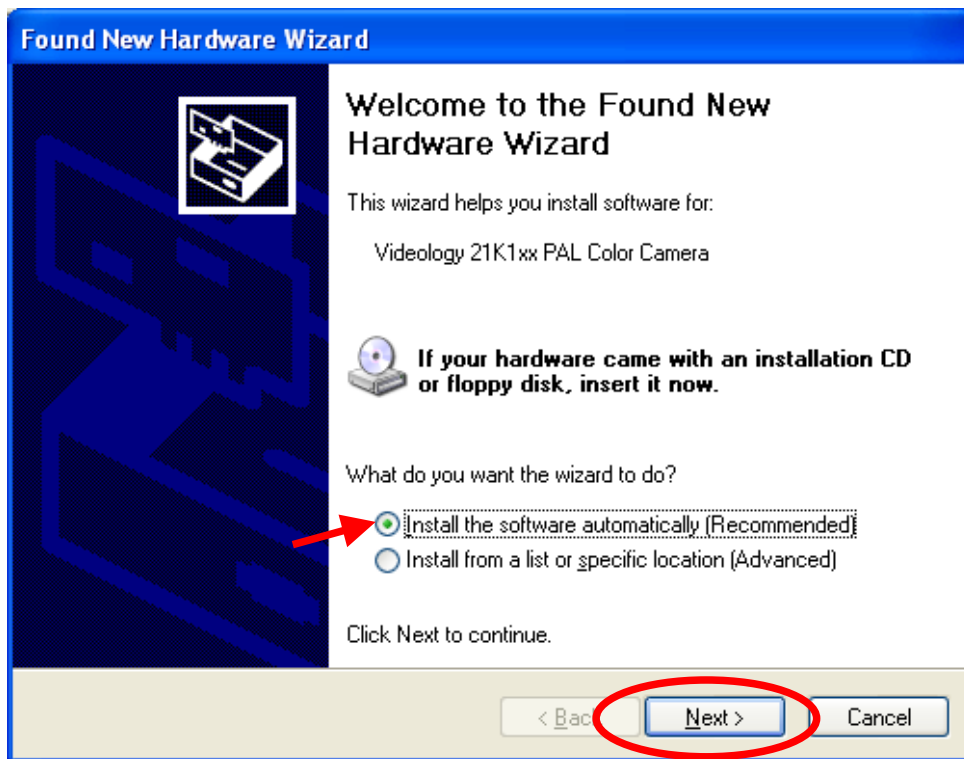


Figure 15

13. A new window will pop up “Hardware Installation” as shown in **Figure 16**. Click on “Continue Anyway” as indicated by the circle to continue.

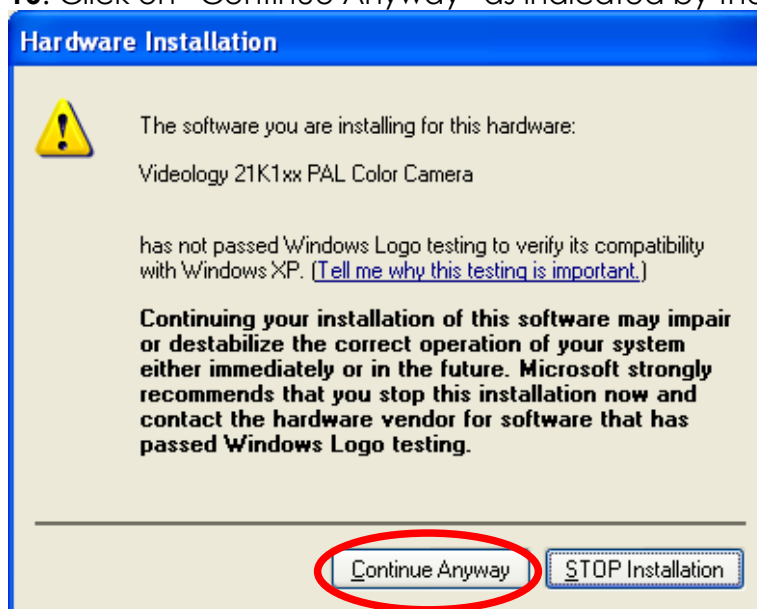
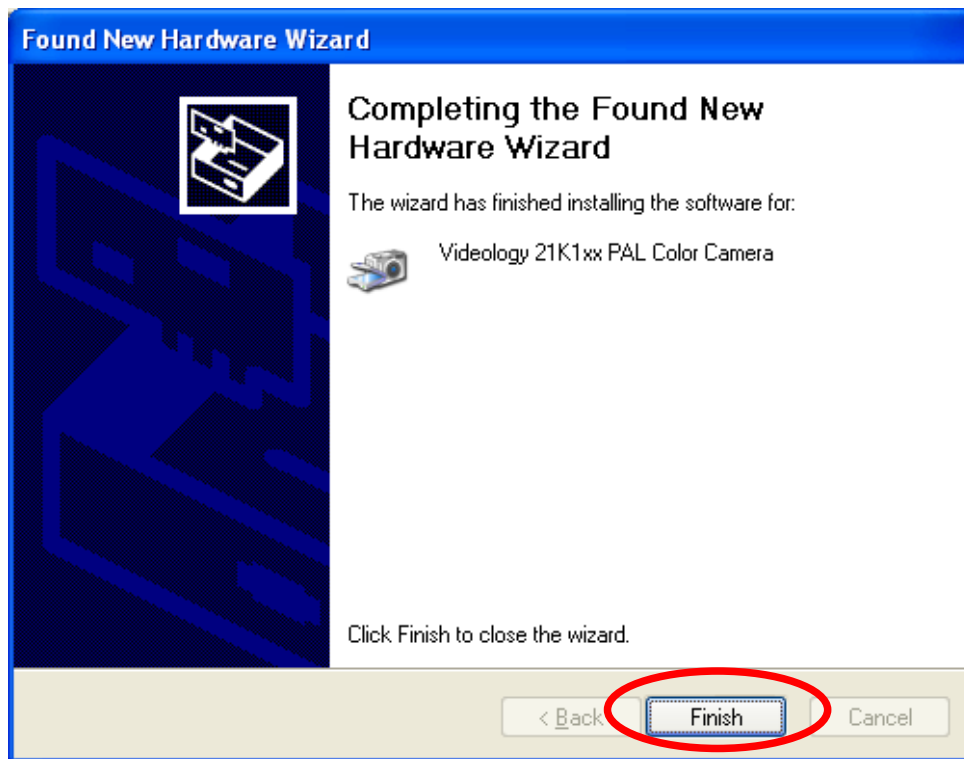


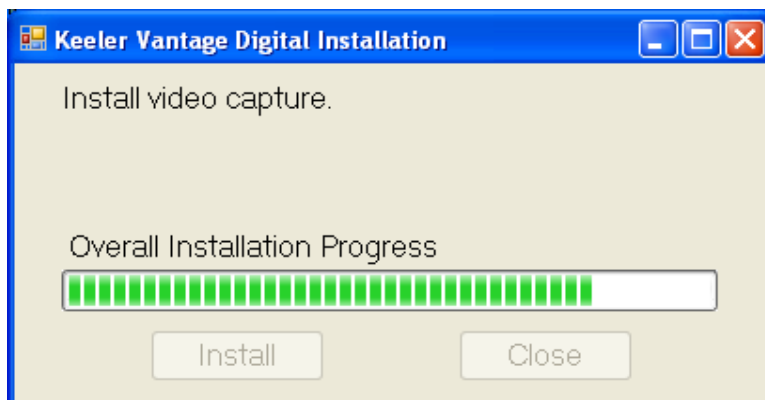
Figure 16

14. The “Found New Hardware Wizard” window changed as **Figure 17**. Click “Finish” to complete Videology camera installation.



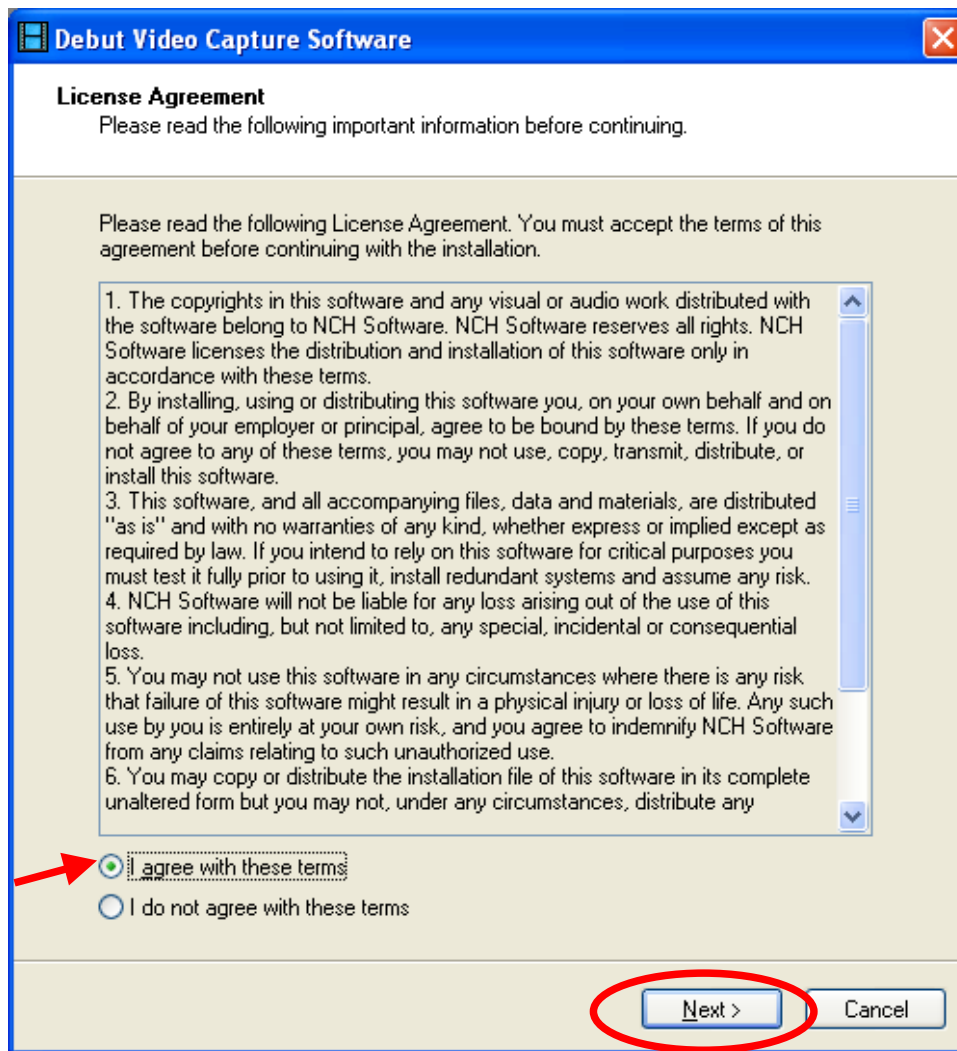
**Figure 17**

15. "Keeler Vantage Digital Installation" changed as **Figure 18**. A new window "Debut Video Capture Software" appears as **Figure 19**. Check "I Agree with these terms" and click "Next" to continue.



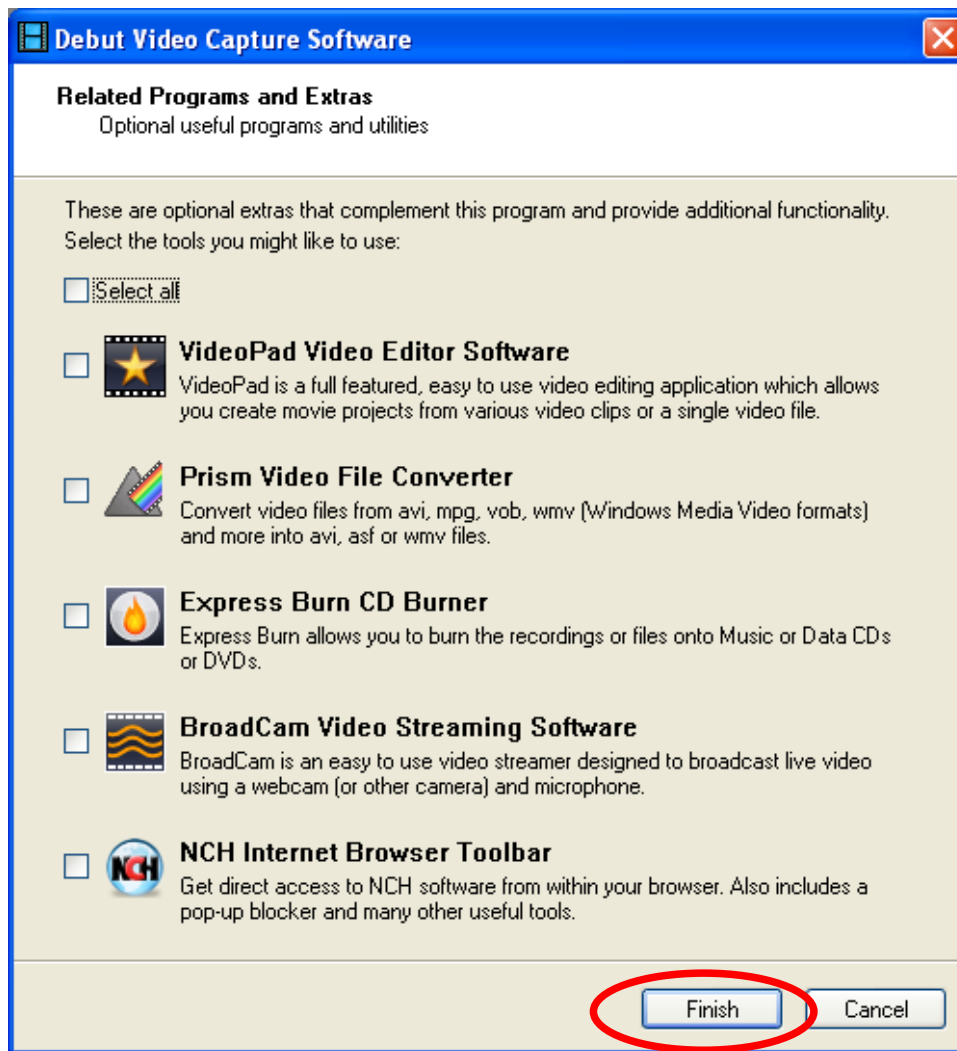
**Figure 18**





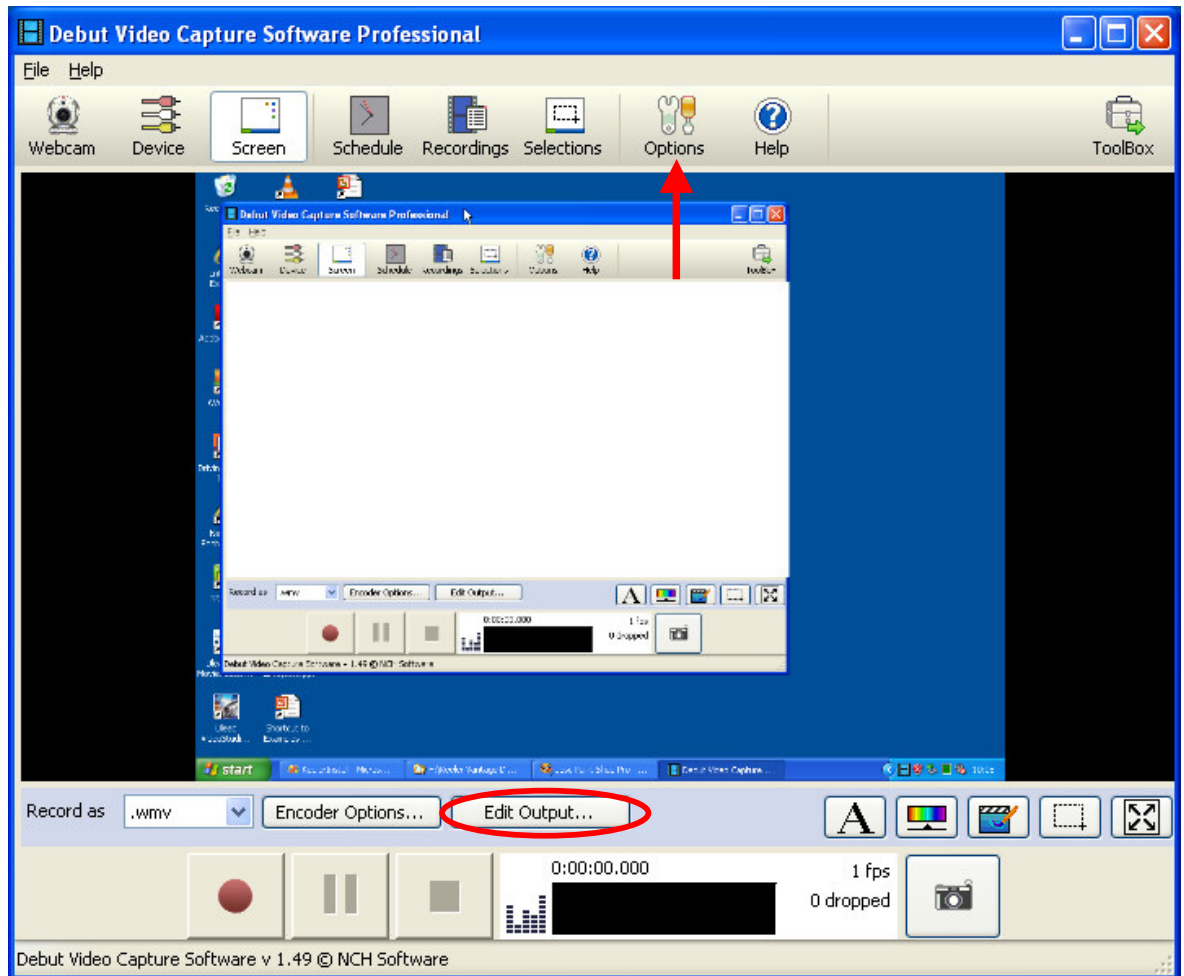
**Figure 19**

16. "Debut Video Capture Software" changed as **Figure 20**. Click "Finish" to continue.



**Figure 20**

17. A new window "Debut Video Capture Software Professional" will appear as **Figure 21**.



**Figure 21**

18. "Keeler Vantage Digital Installation" window changed as **Figure 22**. You have successfully installed "Keeler Vantage Digital". Click "Close" to complete the installation. Leave the "Debut Video Capture Software Professional" window open for following software configuration.

**Note: Debut Video Capture Software Professional is a licensed package. You will need to enter the license code attached to the CD to use the software beyond initial use.**

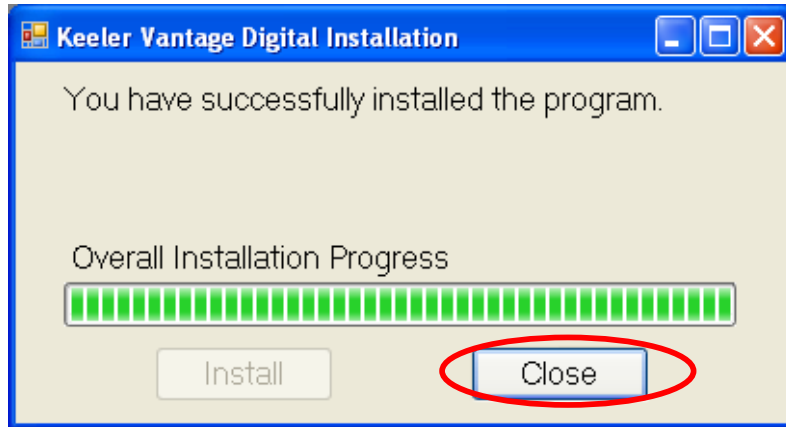


Figure 22

## Software configuration

### Setup Videology camera properties

1. Click "Options" in **Figure 21** to open "Options" window as **Figure 23**.
2. Do following points on "Options" window **Figure 23**:
  - a. Check "Webcam";
  - b. Select the webcam name as "Videology USB-C Camera ";
  - c. Click "Device Settings" button to set up camera properties.

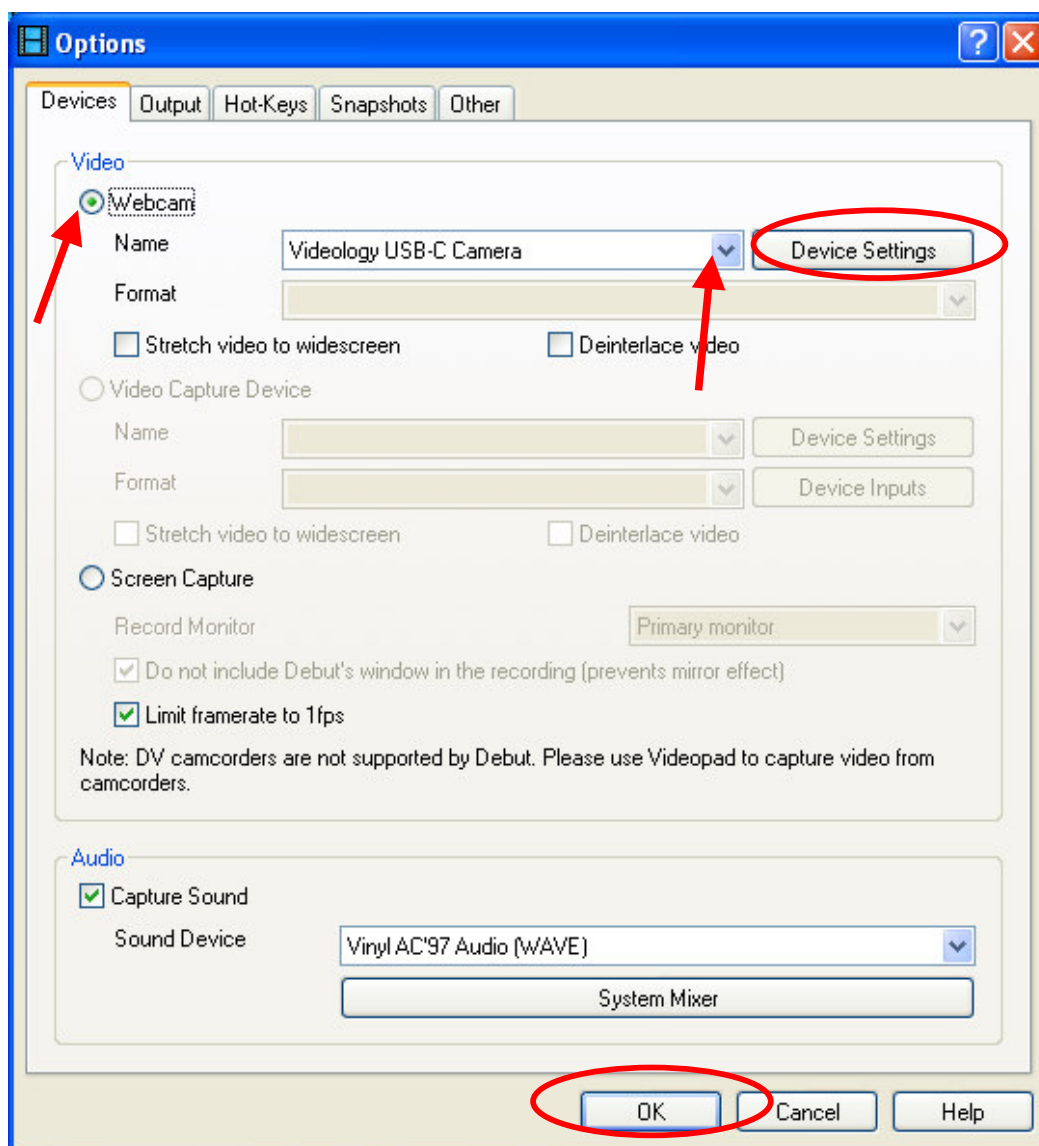
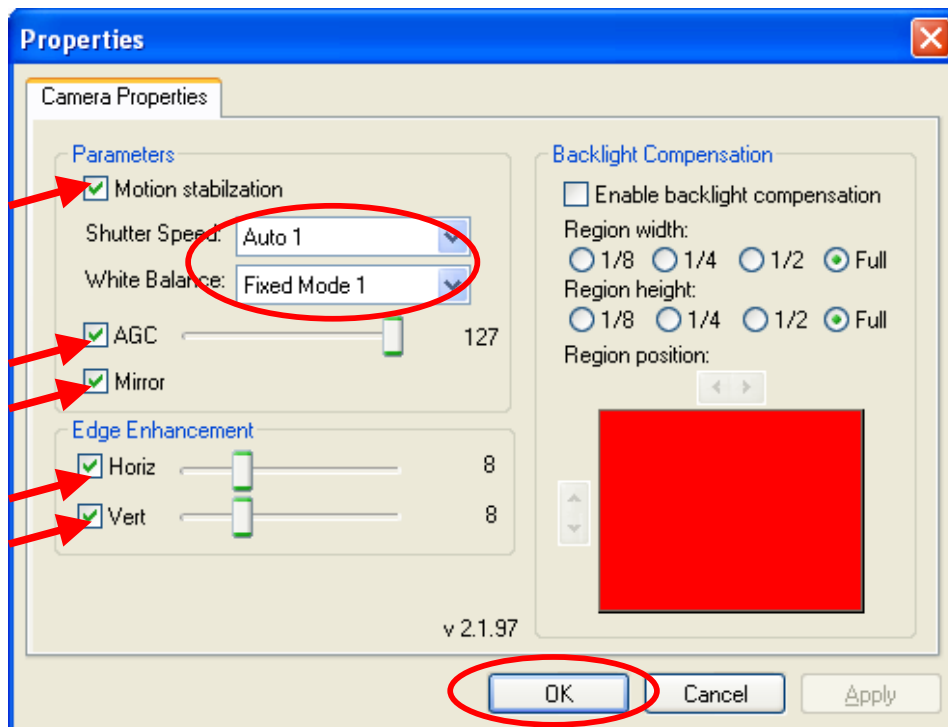


Figure 23

3. Set the camera properties as **Figure 24**. Click "Ok" to complete camera properties setting.
4. Click "Ok" to close "Options" window (refer to **Figure 23**).
5. Click "Edit Output..." (**Figure 21**) to set up the output resolution;



**Figure 24**

6. Set up the Debut Video Capture output resolution to 720 pixels x 576 pixels and others in "video Output Options" window as **Figure 25**. Make sure you have the following option selected:
  - ✓ Resize Video
  - ✓ Shrink or Enlarge the video to the selected size
7. In the box title "Width" enter "720" and in the box title "Height" enter "576".
8. Click "OK" to close "Video Output Options" window.

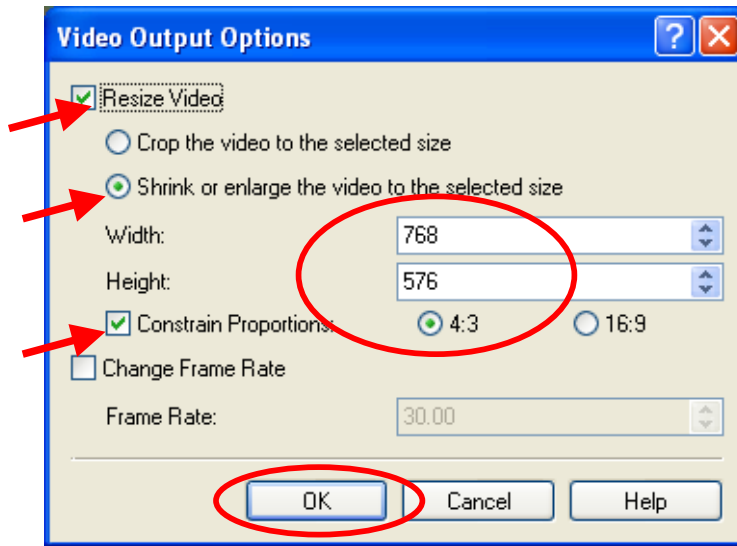


Figure 25

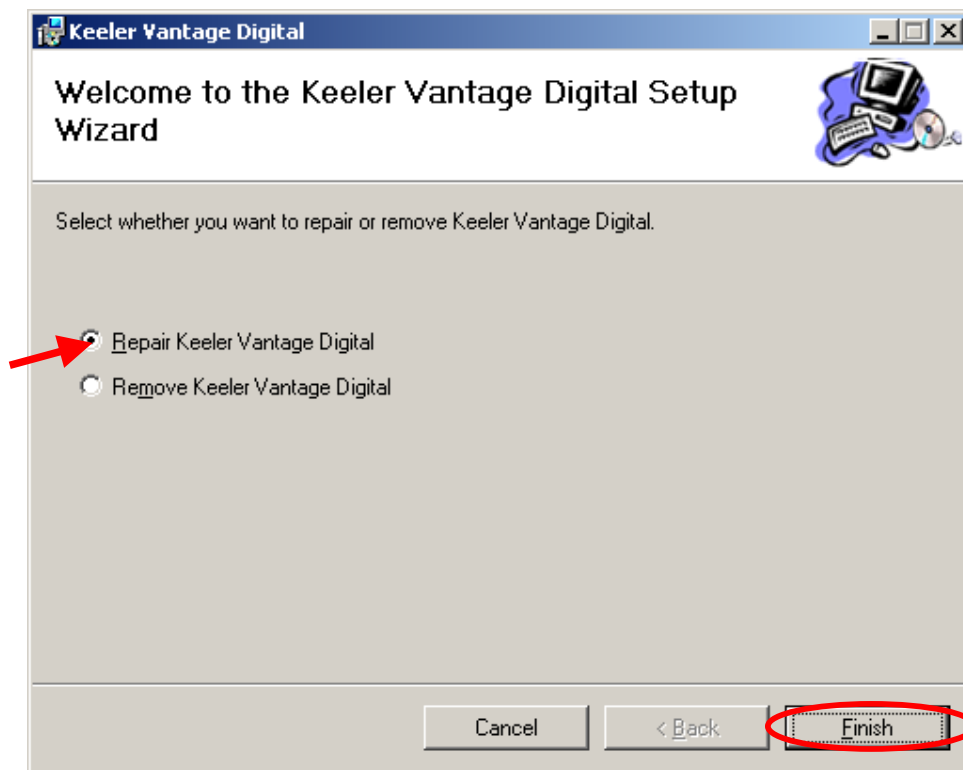
## Software re-installation

### Introduction

If you need to re-install the software for any reason, please follow the steps below:

### Reinstallation

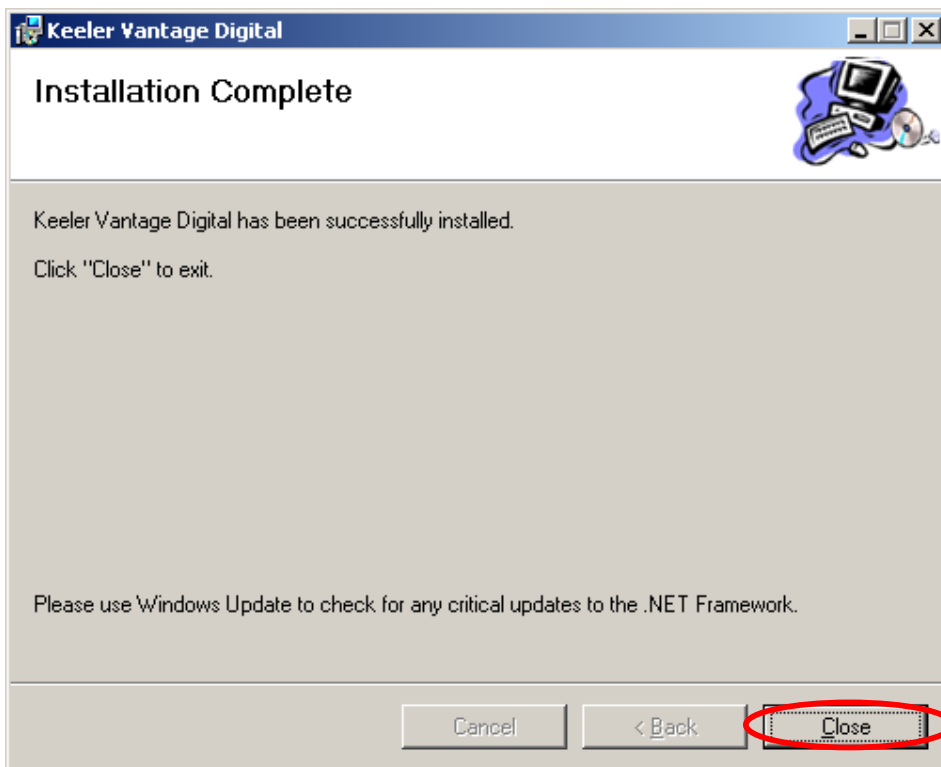
1. Run "Setup.exe" from the Disc. A "Keeler Vantage Digital" window appears as **Figure 26**. Check "Repair Keeler Vantage Digital" and click "Finish".



**Figure 26**

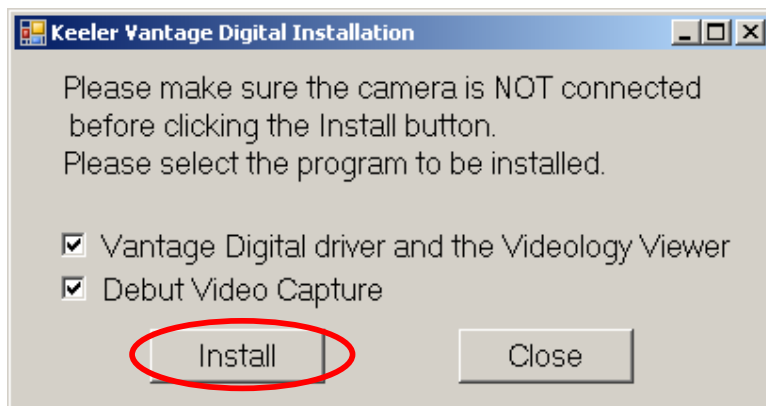
2. Wait until "Keeler Vantage Digital" window changes as **Figure 27** and click "Close".





**Figure 27**

3. A new window appears as **Figure 28**. Click "Install" to continue.



**Figure 28**

4. "Keeler Vantage Digital" window changes as **Figure 29**. A new window "Videology Driver Viewer Uninstall: Uninstalling" appears as **Figure 30**.

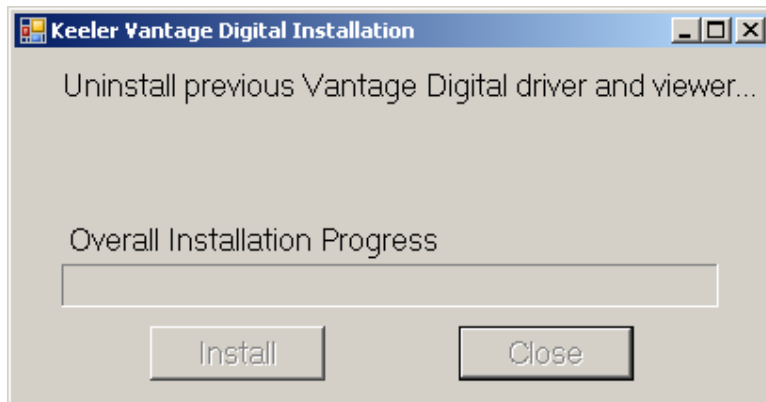


Figure 29

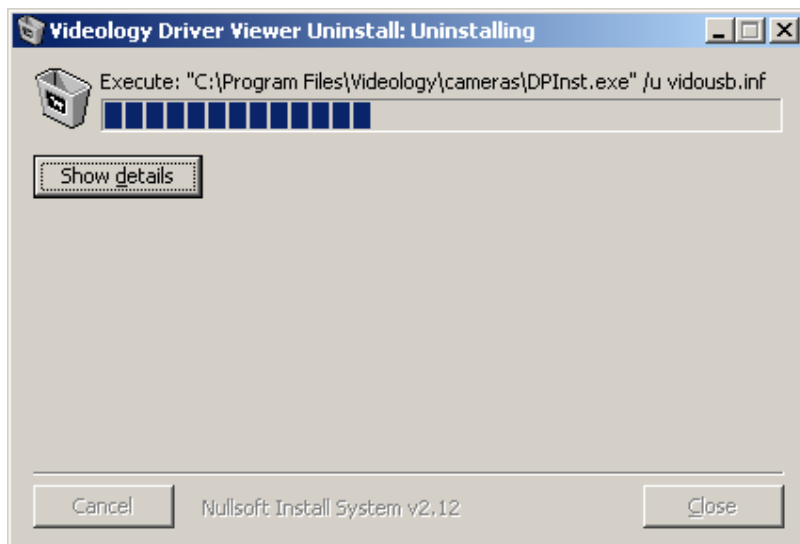


Figure 30

5. A popup "Uninstall Driver Package" window appears as **Figure 31** and click "Yes" to continue.

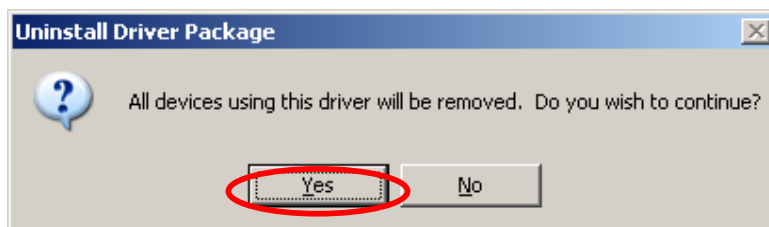
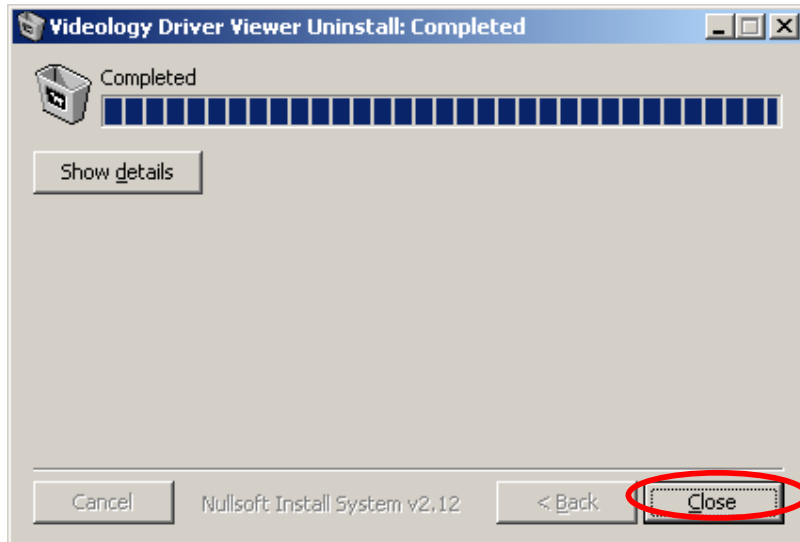
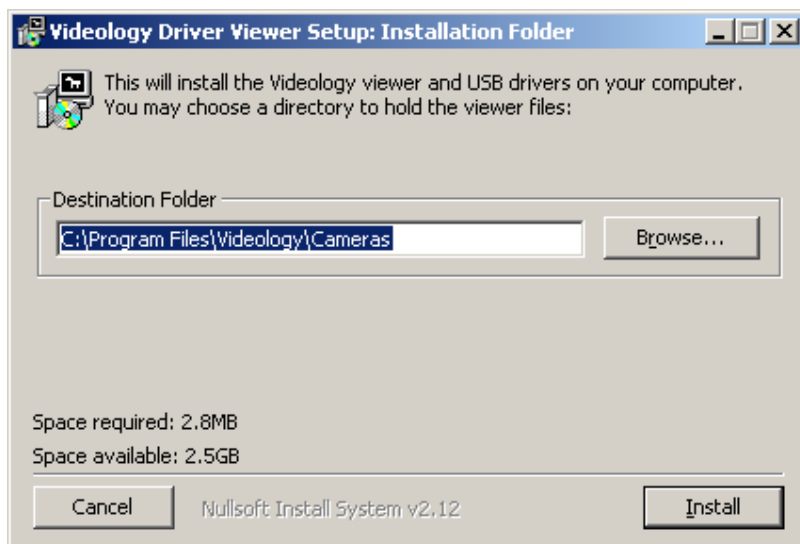


Figure 31

6. Waiting "Videology Driver Viewer Uninstall" changes as **Figure 32**. Click "Close".

**Figure 32**

7. A new window "Videology Driver Viewer Setup: Installation Folder" appears as **Figure 32**. Click "install" to continue.

**Figure 33**

8. Follow the step 7 to step 17 in the section of Installation steps in Software setup to complete the reinstallation.
9. Do all steps in the section of Software configuration in Software setup.

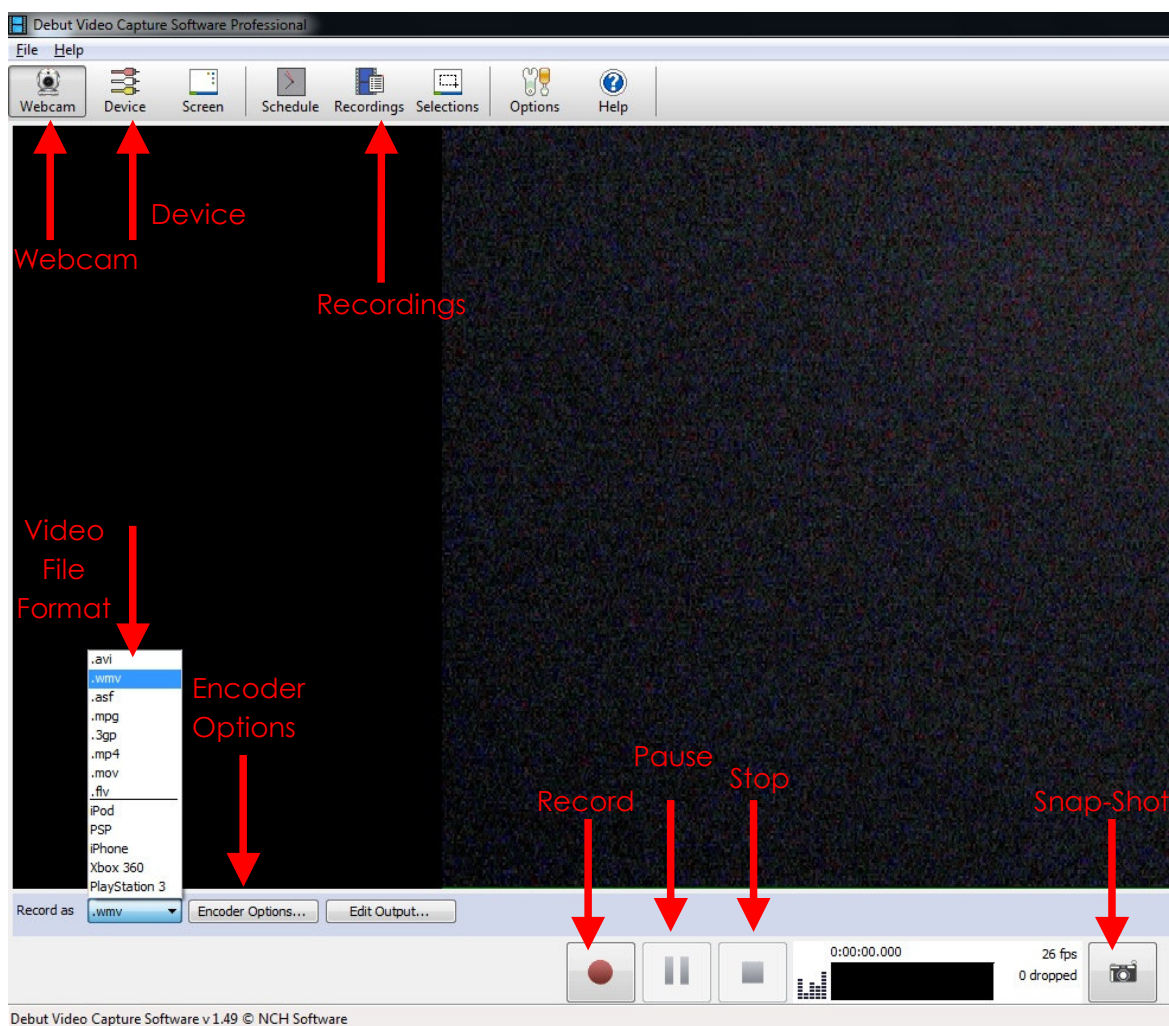
## All About Debut Video Capture

### Introduction

This section is a guide on using Debut Video Capture Professional, covering all aspects you will require to use the software.

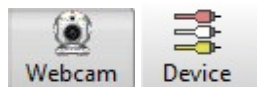
### Debut Video Capture Software Professional

The Debut Video Capture Software Professional enables you to take still pictures and take video recordings. Below is a run down of all buttons and icons required to take still pictures and take video recordings. Refer to **Figure 34**. You will get details all the help information by press F1 key.



**Figure 34**

### Webcam, Device



Clicking on “Webcam” or “Device” will enable you to view the image from the Vantage Plus Digital Indirect Ophthalmoscope.

## Snap-Shot



Allows you take a still picture (like a normal camera). Click on the button to take a picture.

Also works while recording a video.

## Recordings (Ctrl + L Button on the Keyboard)



Is an area where all still pictures and video recordings are stored. Click on the button to view all videos and snap shots previously taken.

## Record (F5 Button on the Keyboard)



Will commence video recording. Click on the button to start a new recording.

## Pause (F6 Button on the Keyboard)



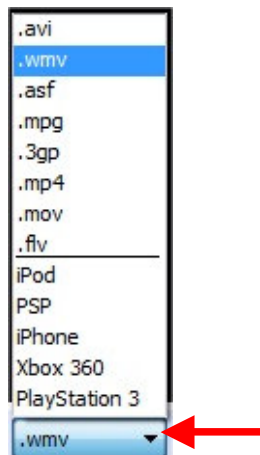
Will temporary suspend recording, until resumed by pressing record.

## Stop (F7 Button on the Keyboard)



Will permanently stop the current video recording, until started again.

### Video File Format

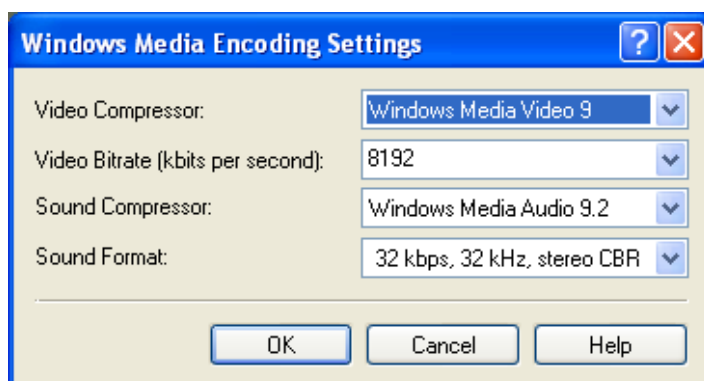


This allows you to choose any specific file format you may wish to record in, we recommend that you use “WMV” as this is the default format used by Windows Media player. You can choose your file format by clicking on the drop down menu and select “.wmv”

### Encoder Options

Encoder Options...

This will pop up a “Windows Media Encoding Settings” window as **Figure 35**, which allows you to choose any specific Video and Sound compressor, Video Bit rate and Sound format to record. We recommend that you use highest video bit rate (8192) to achieve highest video image quality.



**Figure 35**

## Setting up your Accessories

### Remote or Foot Switch



EP79-06359



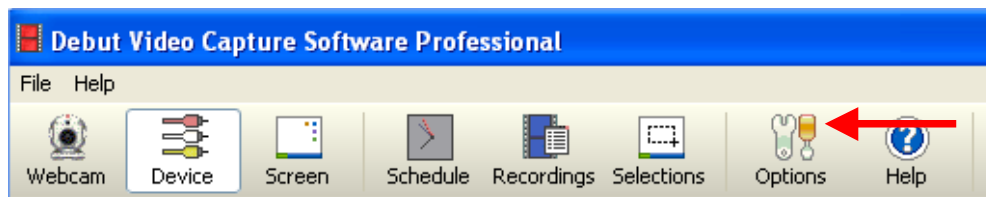
1205-P-7001

#### Introduction

Below is a quick setup guide to installing your remote control/ foot switch. This process is broken down step-by-step on how to setup **ONE** button on the remote/foot switch; this process needs to be repeated **FOR EACH** switch you wish to use. Follow each step carefully.

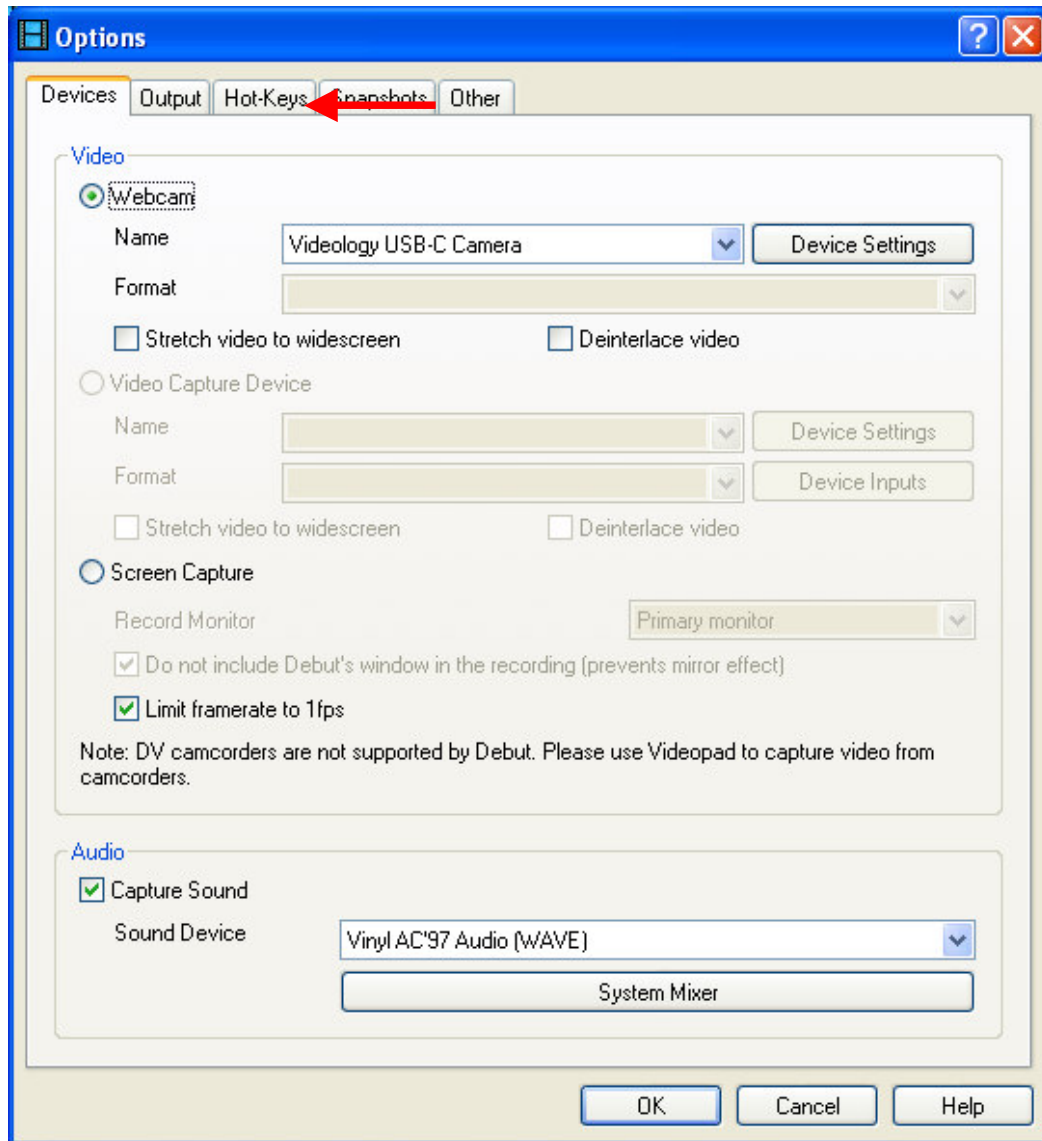
**IMPORTANT: If your accessory is a remote control please refer to the accompanied product's User Guide on how to insert the battery and how to connect the USB receiver to the pc.**

1. Once the device is plugged into the PC open up Debut Video Capture Professional and Follow the instructions below.
2. Click on the "Options" icon as shown in **Figure 36**



**Figure 36**

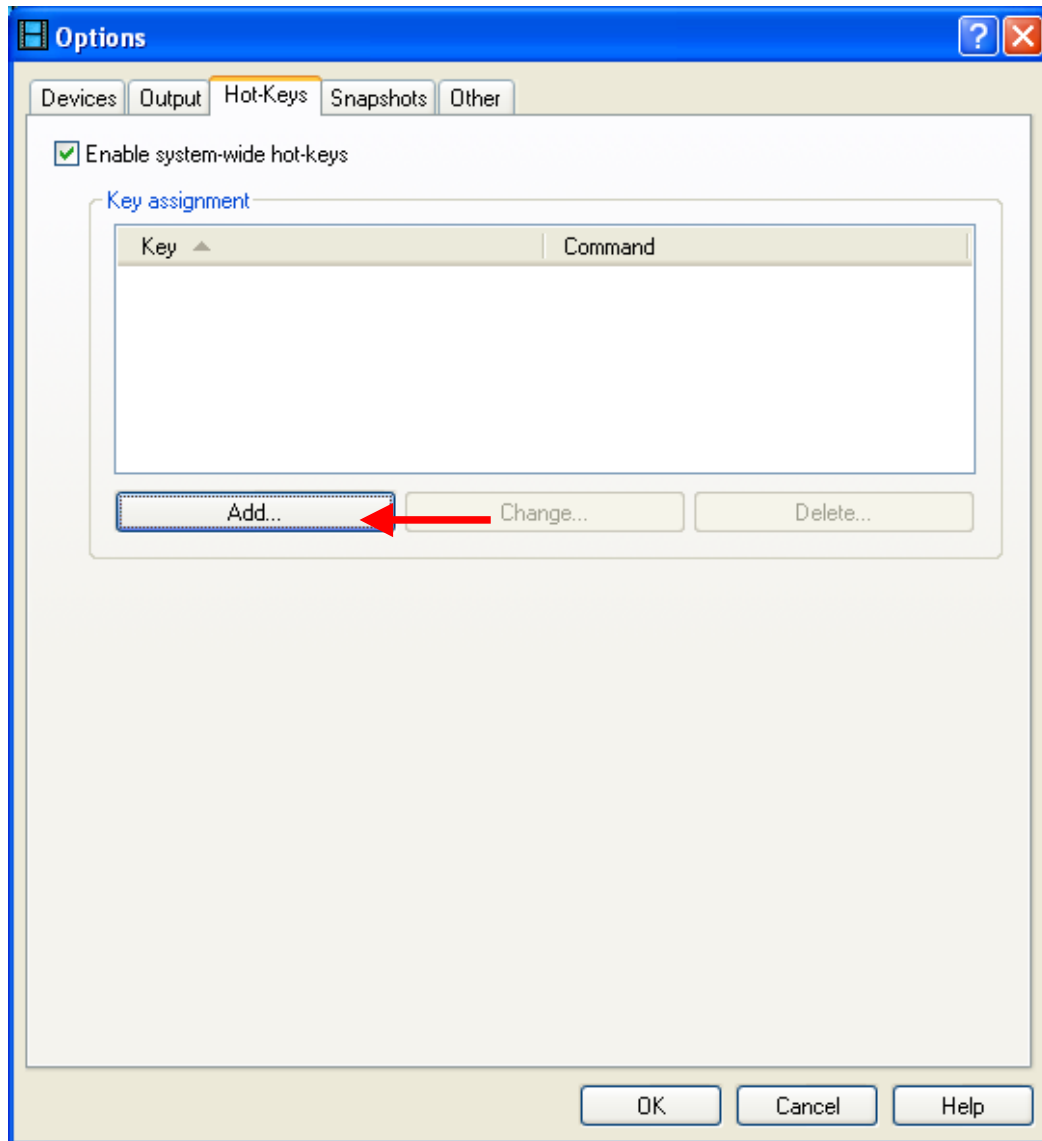
3. A new window will appear as shown in **Figure 37**. Click on the "Hot-Keys" tab as indicated by the arrow.



**Figure 37**

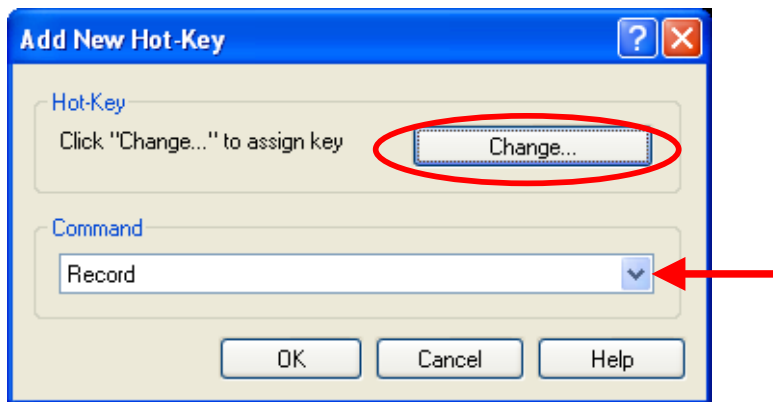
4. If you have followed the previous step, you should see the following screen in **Figure 38**. Click on the “Add” button as indicated by the arrow.



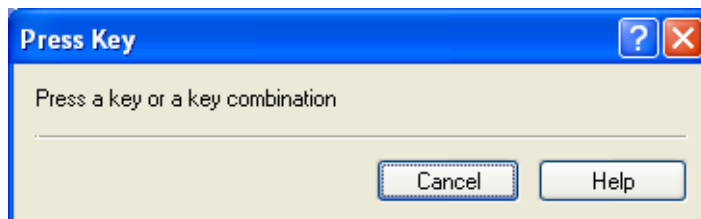


**Figure 38**

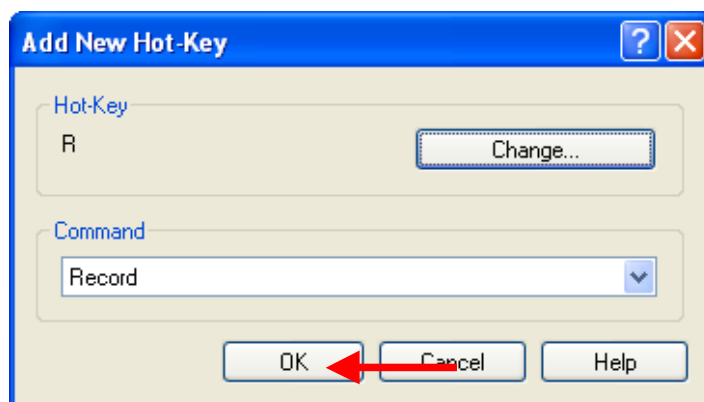
5. A new window called "Add New Hot-Key" should pop up as shown in **Figure 39**. Select a command from Command list box (Red arrow) and then click "Change..." button.

**Figure 39**

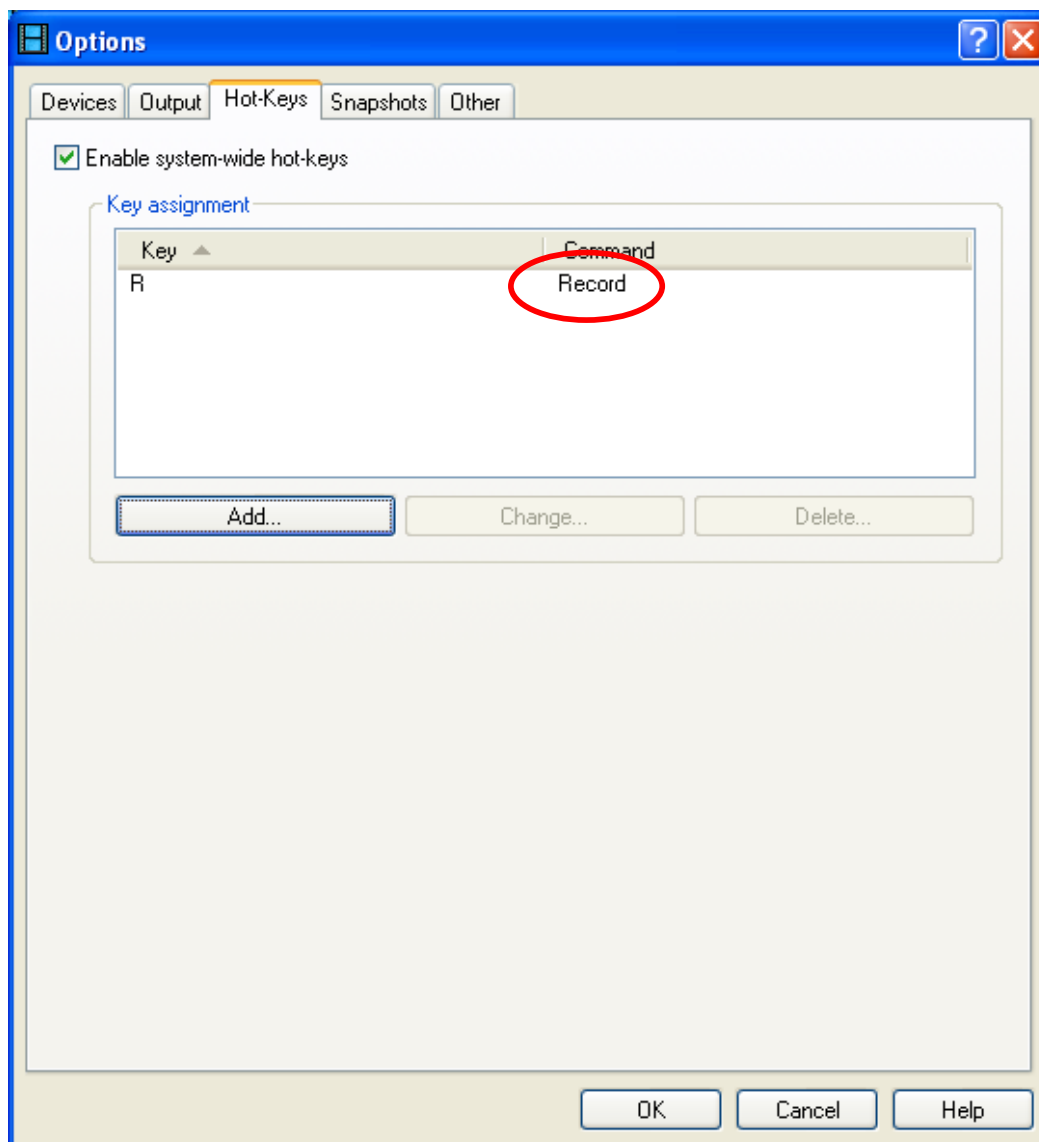
6. A new window called "Press Key" should pop up as shown in **Figure 40**. Click on "an appropriate button" of your choice on the remote/footswitch.

**Figure 40**

7. Once you have clicked on "an appropriate button" of your choice on the remote/footswitch you should see the selected Key has been displayed in the window as shown in **Figure 41**, click "OK" as indicated by the arrows.

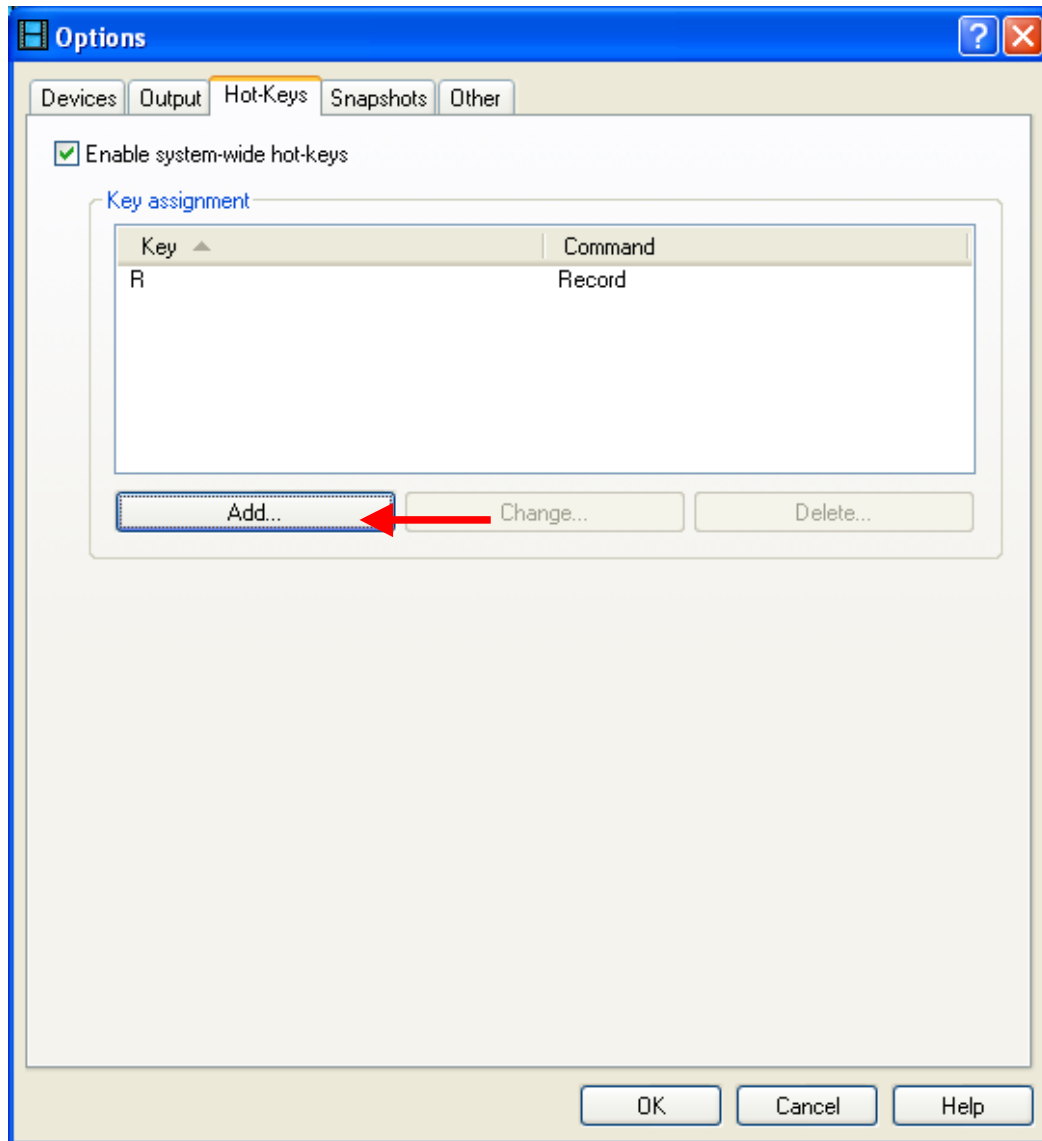
**Figure 41**

8. Once you have clicked on "OK" you should see a screen as shown in **Figure 42**, as you can see from the picture below you have setup your first button "**Record**" as indicated by the circle.



**Figure 42**

9. Click on the "Add" button shown in **Figure 43** to setup up the next switch as indicated by the arrow and follow steps 5 – 9 until you have setup all the buttons you require.



**Figure 43**

10. Once you have setup all your buttons, e.g. **Snap shot, Record, Pause, and stop** you should see a screen as shown in **Figure 44** with all the buttons listed as indicated by the circle. Click on "OK" to complete the setup.

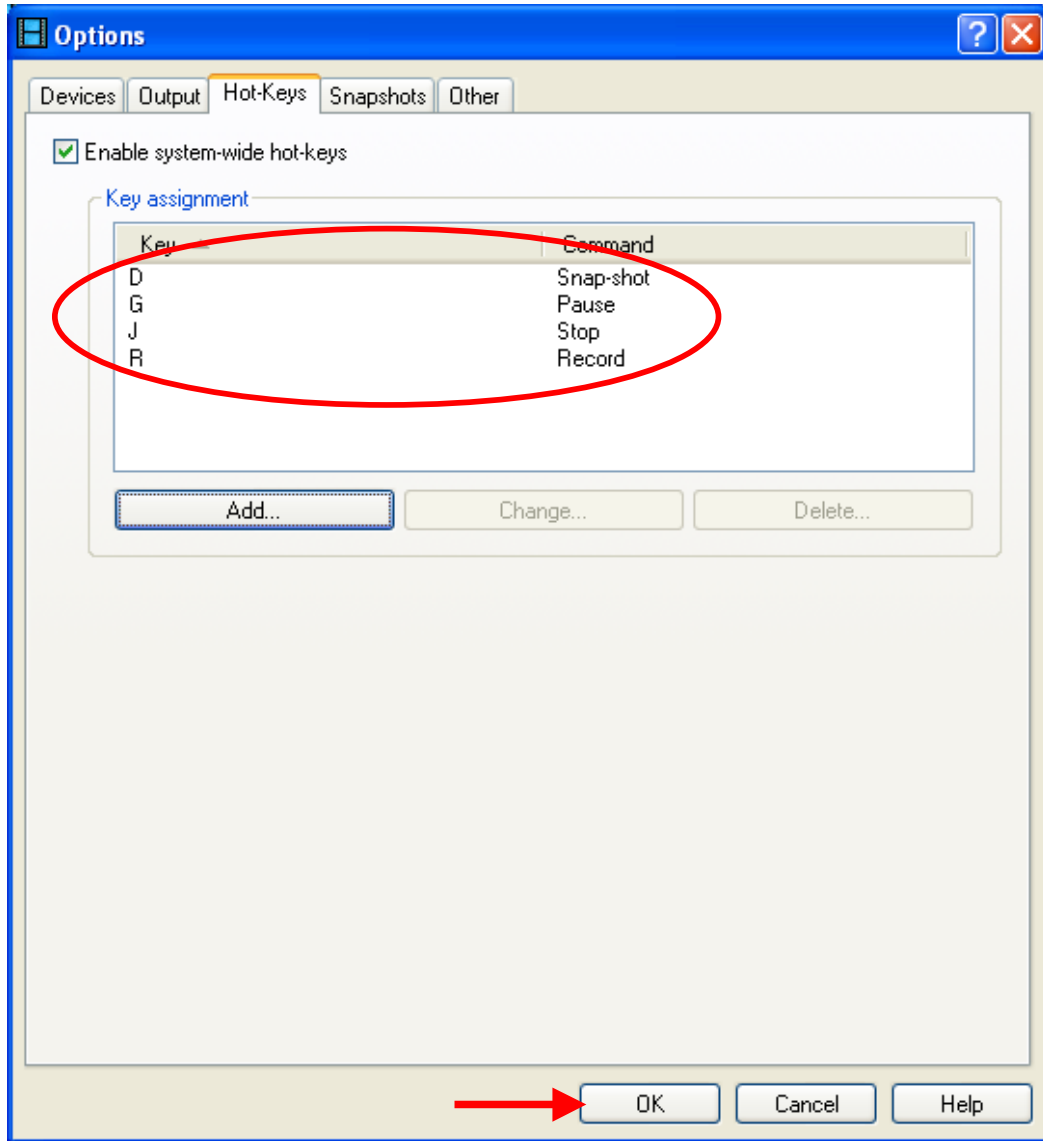


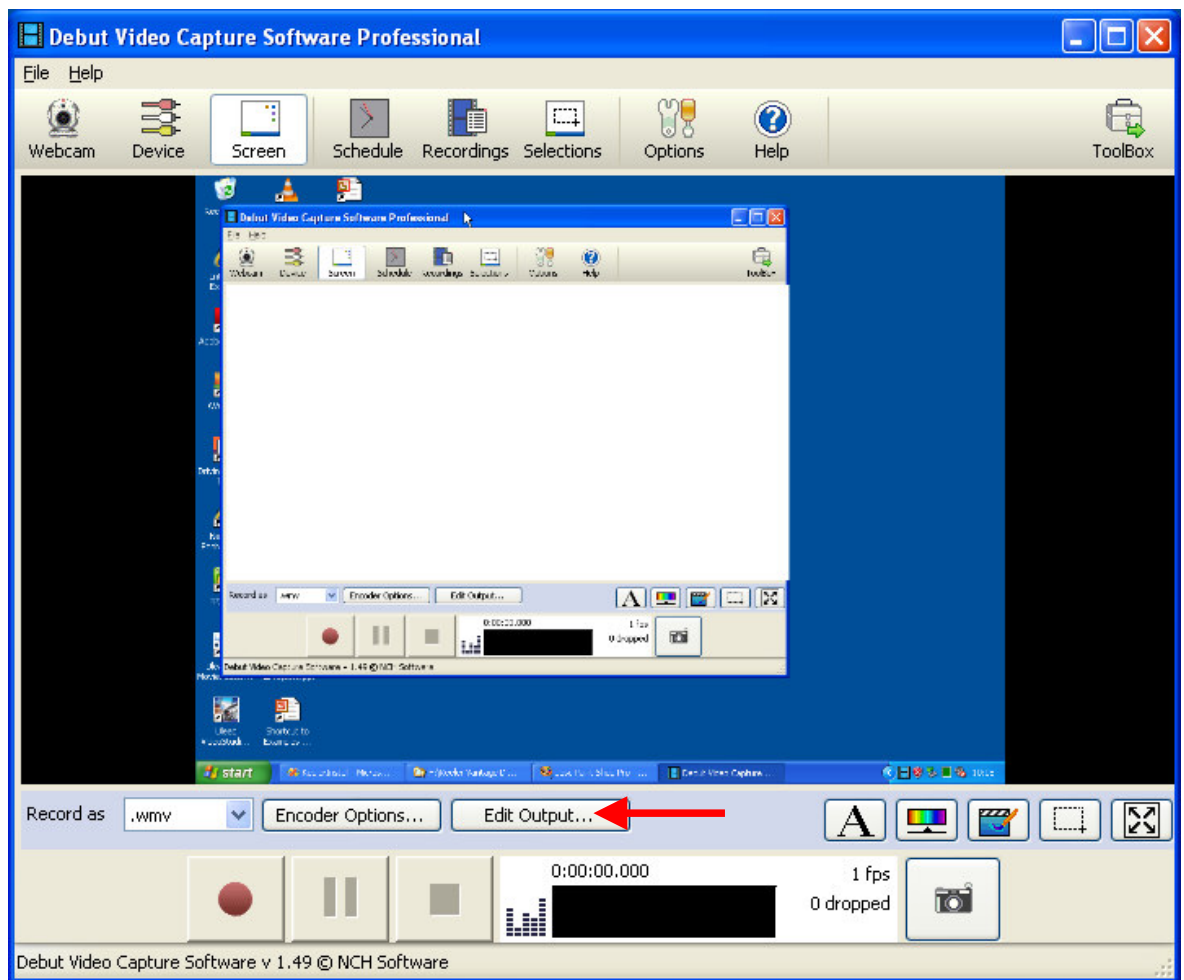
Figure 44

## Troubleshooting Guide

### When I record an image, it's very shaky and I get jitters...

The reason for this problem could be the specification of your computer. During the setup phase of installation we recommend you to select the resolution of \*720 pixels x 576 pixels (maximum resolution for best picture quality). You can reduce the resolution to 640 pixels x 480 pixels to improve the performance by carrying out the following:

1. Click the "Edit Output..." button indicated by the arrow, in Debut Video Capture Professional as shown in **Figure 45**



**Figure 45**

2. You should see a new window "Video Output Options" shown in **Figure 46**. Make sure you have the following option selected:
  - ✓ Resize Video

- ✓ Shrink or Enlarge the video to the selected size

In the box title "Width" enter "640" and in the box title "Height" enter "480". Finally click OK to finish.

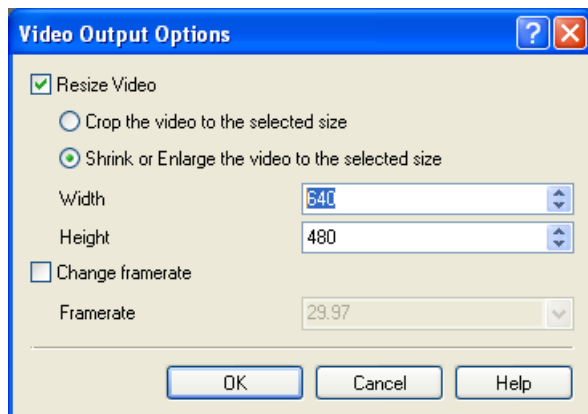
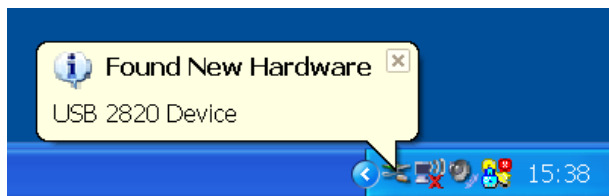


Figure 46

### When I install the camera, its Installed as a "USB 2820" device Found New Hardware "USB 2820"



**Please refer to accompanied video "USB\_2820\_Tutorial" from Windows Start -> All Programs -> Keeler Vantage Digital -> Tools for a more detailed view.**

Some computers may mistakenly identify the camera as an audio only device and install incorrect drivers. If so, please follow the sequence to update the driver on your system to the supplied version.

Below is a brief step-by-step guide to resolving the problem

Click on the "Start" menu

Click on "Control Panel"

Click on "System"

Click on "Hardware"

Click on "Device Manager"

Click on "Sound, Video and Game Controllers"

Click on "USB 2820"

Right click on "USB 2820" and click on "Update Driver"

Select "Install from specific Location" and click "Next"

Select "Don't Search I Will Choose the Driver myself" and click "Next"

Click "Have Disk"

Click "Browse" look for the "Look in" tab with a drop down menu, located at the top. Click on the drop down menu and select your C drive and look for C:\Program Files\Keeler\Keeler Vantage Digital\Windows 7 Drivers. Open the "Windows Drivers" folder

Select the "vidousb.inf" file and click "Open"

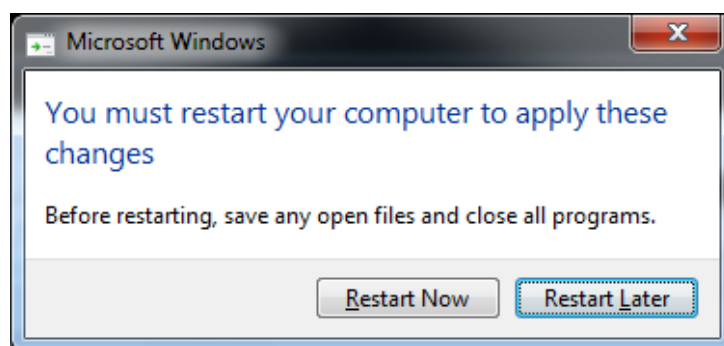
Click "Ok"

Click "Next"

Click "Finish"

### When I reinstall the program from disc, the windows operating system asks to restart computer. What can I do for it?

When reinstall the program, a "Microsoft Windows" appears as **Figure 47** occasionally. You should select "Restart Later" to complete the installation. After completed the installation, please restart your computer.

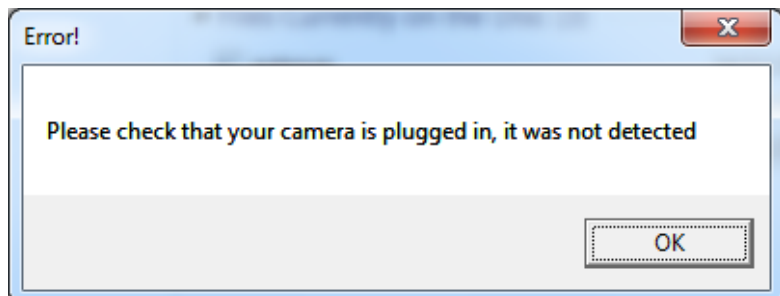


**Figure 47**

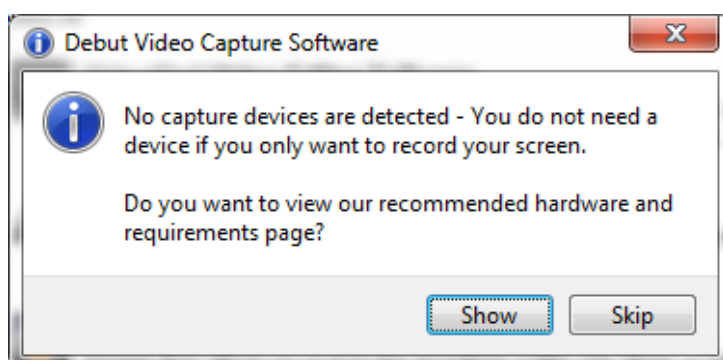


## I plugged in the camera, but an error message shows no camera has been detected. What can I do?

The error message is as either **Figure 48** or **Figure 49**.



**Figure 48**



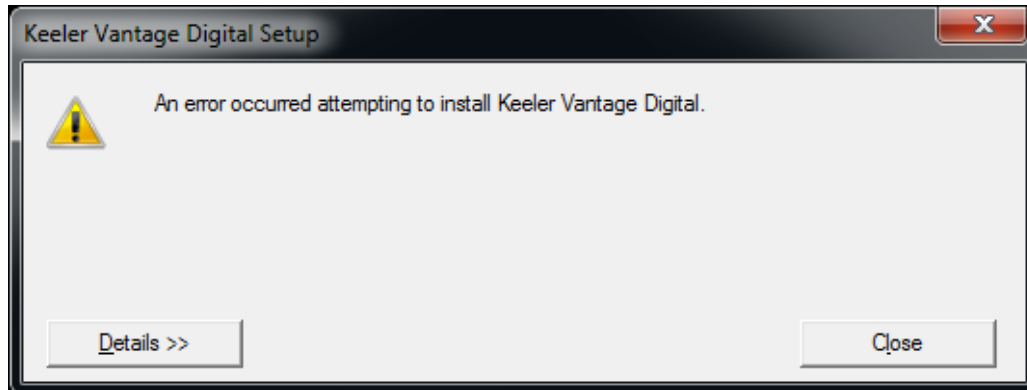
**Figure 49**

1. Close the Debut Video Capture Professional program.
2. Safely remove Keeler Vantage Digital from computer.
3. Wait about 10 seconds and then plug in Keeler Vantage Digital. Wait for Windows operating system completing the installation of the hardware.
4. Run "Debut Video Capture Professional" to see if it works.
5. In most case, the problem has been solved from above four steps. If not, run "Install" from Windows Start -> All Programs -> Keeler Vantage Digital.
6. Follow the installation steps to complete the installation. The problem will be solved.

## What can I do for the error message "An error occurred attempting to install Keeler Vantage Digital"?

If your computer has a previous version "Keeler Vantage Digital" setup program installed and not uninstalled before the installation. The error message will appear as **Figure 50**. Uninstall the previous version "Keeler Vantage Digital" from "Add and

Remove programs" in Control Panel for Windows XP, or from "Uninstall or change a Program" in Control Panel -> All Control Panel Items -> Programs and Features for Windows 7. The problem will be solved.



**Figure 50**

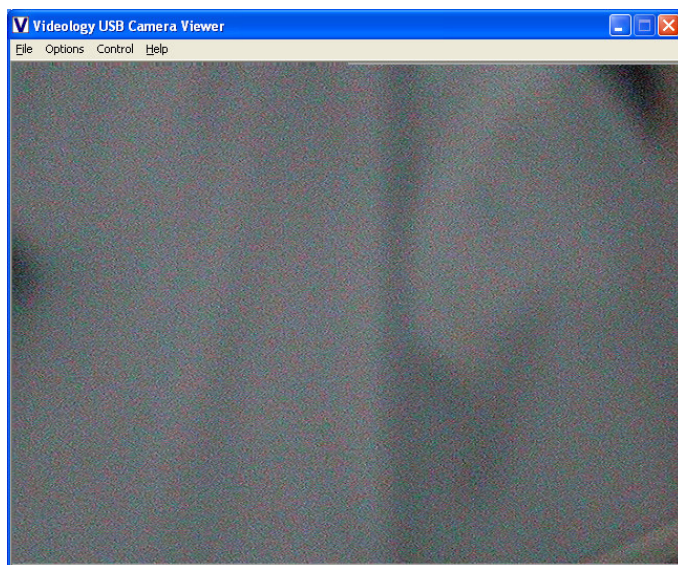
### Default Software Settings.

Shown below are the default factory settings for the camera after manufacture, the screen shots below will assist you to restore the factory settings should you accidentally change/alter any camera settings.

We highly recommend you use our factory settings on the camera to obtain the best possible resolution.

### How and Where to make the Changes?

Click on the **Start** menu -> **All Programs** -> **Videology Cameras** -> and click on **Viewer**; and the Videology viewer will open up as shown in **Figure 51**



**Figure 51**

### Camera Feature Control

In the Videology Viewer click on "**Control**" -> "**Camera Control**" and you should see the screen shown on **Figure 52**, make sure your screen looks **EXACTLY** as the screen shown below.

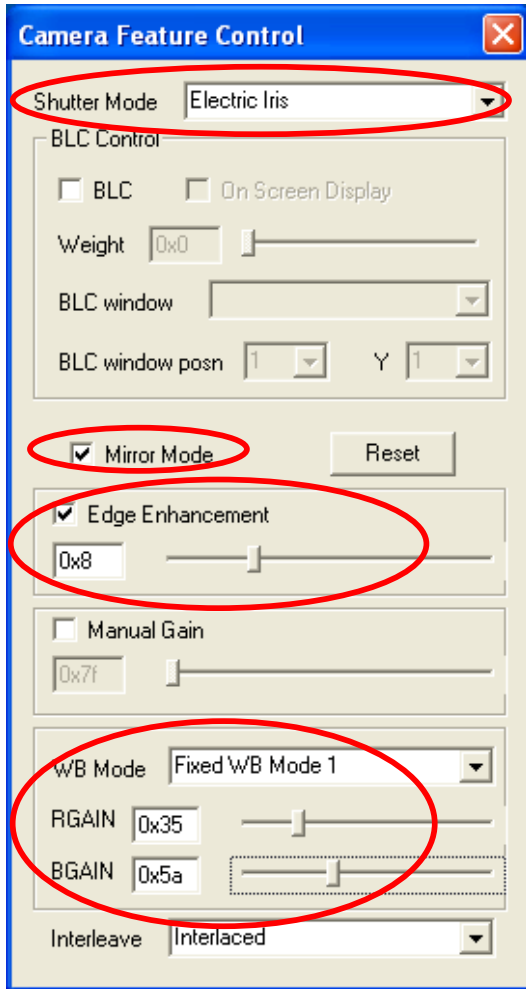


Figure 52

Windows® is a registered trademark or trademarks of Microsoft Corporation in the United States and other Countries

Pentium® is a registered trademark of Intel Corporation

Debut ® is a registered trademark of NCH Swift Sound

Other company names and products names written in this document are trademarks or registered trademarks of the respective company.

*Part of our policy for continued product development we reserve the right to amend specifications at any time without prior notice.*



## Manufactured by:

### Keeler Ltd

Clewer Hill Road  
Windsor  
SL4 4AA  
United Kingdom

Telephone: + 44 (0)1753  
857177

Fax: + 44 (0)1753 827145

Email: [info@keeler.co.uk](mailto:info@keeler.co.uk)

Website:

[www.keeler.co.uk](http://www.keeler.co.uk)

## Distributed by:

### Keeler Instruments Inc

456 Parkway  
Broomall  
PA 19008  
USA

Toll Free: 1 800 523 5620

Telephone: 610 353 4350

Fax: 610 353 7814

Email:

[keeler@keelerusa.com](mailto:keeler@keelerusa.com)

Website:

[www.keelerusa.com](http://www.keelerusa.com)

## Sales office:

### Keeler Scotland

25 Deerdikes View  
Westfield Estate  
Cumbernauld  
G68 9HN  
United Kingdom

Telephone: + 44

(0)1236721214

Fax: +44 (0)1236 721231

Email: [info@keeler.co.uk](mailto:info@keeler.co.uk)

Website:

[www.keeler.co.uk](http://www.keeler.co.uk)

EP59-09871

ISSUE D

—A—  
**HALMA**  
**GROUP**  
**COMPANY**