



KONICA MINOLTA

NEW

Wristwatch-Sized Pulse Oximeter

OXYGEN SATURATION MONITOR

PULSOX[®]-300

The compact and lightweight PULSOX Series, which has been well received in clinics, hospitals, and home care environments, now includes a new model with improved functionality and usability.



Large, easy-to-read LED display !!

The large LED display ensures clear readings can be seen even in the darkest places.

PULSOX[®]-300



User-friendly design with automatic power-off function !

A single AAA-size battery provides about 4,000 spot measurements. (under Konica Minolta's test conditions)

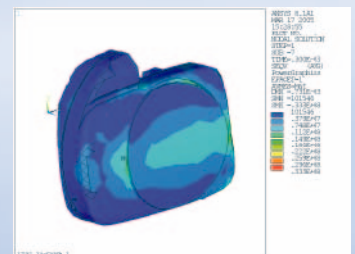


PULSOX[®]-300



Designed using 3D CAD for doubled impact resistance !

(Compared with Konica Minolta's conventional model PULSOX-3 based on structural analysis using the finite element method)



PULSOX[®]-300



Perfect fit on the wrist !

The contact surface is contoured to significantly improve stability during movement.
The main unit weighs only 56 g (including the battery).

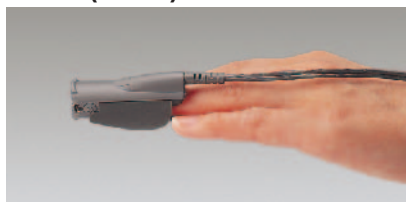


The essentials of imaging

Select from 4 types of optional probes

The optimum probe can be selected from 4 types according to the application.

Finger Clip Probe SR-5C (0.3 m)



For continuous measurements with the main unit worn on the wrist.

Monitor Probe LM-5C (0.3 m)



For continuous measurements over a long period of time such as while sleeping.

Spot Check Probe SP-5C (0.5 m)



For face-to-face measurements in clinics or hospitals.

Extension Cable (optional) EC-300 (1 m)



For connecting the probe to the main unit to allow the length to extend.

Personal Probe SD-5C/SD-5C (20) Package of 5 (0.5 m)



For single-patient use

(Example of Spot Check Probe **SP-5C**.)



Main specifications

■ Dual-wavelength pulse type (665nm/880nm) arterial blood oxygen saturation measuring instrument

- Name: Oxygen Saturation Monitor
- Model name: PULSOX-300

■ Functions:

- Measuring range: SpO₂: 0 to 100% SpO₂
Pulse rate: 30 to 230 bpm
- Accuracy: SpO₂: ±2% SpO₂ (70 to 100% range, 1S.D.)
Pulse rate: ±2 bpm (30 to 100 range)
or ±2% of value (100 to 230 range)

■ Display

Display type: LED display

Oxygen saturation (SpO₂), Pulse rate, Pulse level meter (5 steps), Battery indication, Error messages indication

■ Warning functions

SpO₂: Low SpO₂ warning (flashing display), Battery indication (flashing when the battery is nearly empty), Error message indication

■ Operating conditions

temperature/humidity range 0 to 40°C (32 to 104°F); 30 to 85% relative humidity with no condensation

atmospheric pressure/altitude range 700 to 1060hPa (altitude: -400 to 3000m)

■ Storage conditions

temperature/humidity range -10 to 60°C (14 to 140°F); 10 to 95% relative humidity with no condensation

atmospheric pressure/altitude range 700 to 1060hPa (altitude: -400 to 3000m)

■ Power

1 AAA-size battery: 1.5V , 100mW (Service life under continual usage: approx. 16 hours with alkaline battery)

■ Dimensions (W × H × D)

68 × 58 × 15 mm

■ Weight

56 g (including battery/excluding wrist band and probes)

■ Usable life

6 years [Verified by KONICA MINOLTA SENSING, INC. (based on own data)]

Standard accessories

- Wrist Band WB-300
- 1 AAA-size alkaline battery

Specifications are subject to change without notice.

SAFETY PRECAUTIONS



For correct use and for your safety, be sure to read the instruction manual before using the instrument.

- Be sure to use the specified batteries. Using improper batteries may cause a fire or electric shock.

KONICA MINOLTA SENSING, INC.

Konica Minolta Photo Imaging U.S.A., Inc.
Konica Minolta Photo Imaging (HK) Ltd.
Konica Minolta Photo Imaging Asia HQ Pte Ltd.

3-91, Daisennishimachi, Sakai.Osaka 590-8551, Japan

725 Darlington Avenue, Mahwah, NJ 07430, U.S.A. Phone: 888-473-2656 (in USA), 201-574-4000 (outside USA) FAX: 201-574-4201
Room 1818, Sun Hung Kai Centre, 30 Harbour Road, Wanchai, Hong Kong Phone: 852-34137508 FAX: 852-34137509
10, Teban Gardens Crescent, Singapore 608923 Phone: +65 6563-5533 FAX: +65 6560-9721