

## DATASHEET

The SureSight Video laryngoscope solution offers a range of single-use non-sterile blades that are manufactured using a PC bioplastic material\*. The blade portfolio is suitable for use in routine and emergency intubation procedures, as well as difficult airway intubations.

### COMPREHENSIVE RANGE OF BLADES

The multiple blade options allow you to match the patient's anatomy, obtain an optimal view of the airway, and facilitate endotracheal intubation. The portfolio includes options for adults and paediatrics that are suitable for both routine and difficult intubations. They can be used for emergent or planned procedures.

### INTUITIVE AND ERGONOMIC

The design of the blades makes them easy and comfortable to use. The grip provides optimal control. It is quick and easy to attach and detach the blades. An audible click confirms that they are securely attached to the SureSight Connect handle. The handle then connects to the aView 2 Advance or aBox 2 endoscopy system for plug-and-play usage.

### HIGH-QUALITY IMAGING

The blade's built-in camera and LED light provide a clear view of the patient's upper airway with crisp, sharp images that make it easy to identify the anatomical landmarks for intubation. In addition, the lens of the camera is treated with anti-fog technology, which helps to ensure a consistent image throughout the intubation.



## Ambu® SureSight™ Videolaryngoscope Blades

A comprehensive range of  
adult and paediatric sizes

### KEY BENEFITS

High quality imaging

PVC and Phthalate-free

Comprehensive range of blades, including;  
Miller, Macintosh, hyper-angulated, and  
channeled hyper-angulated variants

Integrated camera and LED light

Camera lens treated with anti-fog technology

Grip provides optimal control

Designed for easy attachment / detachment

Single-use, non-sterile blades manufactured  
using a PC bioplastic material\*

\*The PC Bioplastic material\* (using bio-attribution) used in our blades consists of 55 % second generation bio-based feedstock and 45 % traditional fossil-based feedstock (certified under mass-balance).

## TECHNICAL SPECIFICATIONS

Optical System	All Ambu SureSight Blades
Field of view [°]	68 (±15 %)
Direction of view	Forward viewing
Depth of field [mm]	12 - 115
Illumination method	LED
Anti-fog technology	Yes
Biocompatible	Yes

### Transportation Conditions

Temperature [°C, (°F)]	10 - 55 (14 - 131)
Relative humidity [%]	10 - 95
Atmospheric pressure [kPa, (psi)]	50 - 106 (7 - 15)

### Storage Conditions

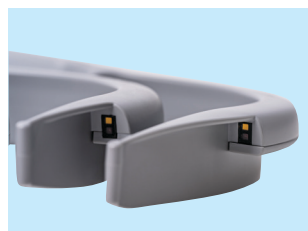
Temperature [°C, (°F)]	10 - 25 (50 - 77)
Relative humidity [%]	10 - 85
Atmospheric pressure [kPa, (psi)]	50 - 106 (7 - 15)

### Operating Environment

Temperature [°C, (°F)]	10 - 40 (50 - 104)
Relative humidity [%]	30 - 85
Atmospheric pressure [kPa, (psi)]	80 - 106 (11 - 15)
Altitude [m]	≤ 2000

## ORDERING SPECIFICATIONS

Item No.	Product Description	Box Quantity
390100000	Ambu SureSight Blade Miller #0	5
390110000	Ambu SureSight Blade Miller #1	5
390210000	Ambu SureSight Blade Hyper #1	5
390220000	Ambu SureSight Blade Hyper #2	5
390520000	Ambu SureSight Blade Hyper #2C	5
390230000	Ambu SureSight Blade Hyper #3	10
390530000	Ambu SureSight Blade Hyper #3C	10
390240000	Ambu SureSight Blade Hyper #4	10
390330000	Ambu SureSight Blade MAC #3	10
390340000	Ambu SureSight Blade MAC #4	10



The SureSight blades have an integrated camera and LED



The channeled hyper-angulated blades allow for an endotracheal tube to be pre-loaded into the blade prior to intubation



The portfolio of blades includes options for adults and paediatrics that are suitable for routine and difficult intubations. They can be used for emergent or planned procedures

# Ambu

 Ambu A/S  
 Baltorpbakken 13  
 2750 Ballerup  
 Denmark  
 T +45 72 25 20 00  
 ambu.com

## Compatibility

SureSight devices	Ambu SureSight Connect
Agents and lubricants	Water-based lubricants
	Isotonic saline solution
	Water
	70 % ethanol
Gels and solutions	70 % isopropyl alcohol
	Anti-fog agent
	2 % lidocaine solution
	2 % lidocaine gel
Endotracheal tube sizes (internal diameter) compatible with channeled hyper-angulated blades [mm]	10 % lidocaine aerosol spray
	Sevoflurane
3C: 6.0 - 8.0	2C: 4.5 - 5.5

## General

Free of polyvinyl chloride (PVC)	Yes
Free of phthalates	Yes
Free of natural rubber latex	Yes