

CHLORINE WIPEES

Our ready to use Chlorine Wipes deliver a rapid biocidal action against a broad spectrum of micro-organisms and spores across non-porous hard surfaces, equipment and non-invasive medical devices.

1 product in this range.



AT A GLANCE:

- ✓ PHMB Free
- ✓ Alcohol Free
- ✓ Dermatologically tested
- ✓ Low chlorine odour

IDEAL FOR:

- ✓ High level disinfection where there is a known or high risk of infection
- ✓ Rapid use in time sensitive areas with ready to use format
- ✓ Use where toxicity or corrosion from other high level disinfectants causes issues



SKIN HYGIENE



HIGH LEVEL DISINFECTION



SURFACE CLEANING



SURFACE DISINFECTANT

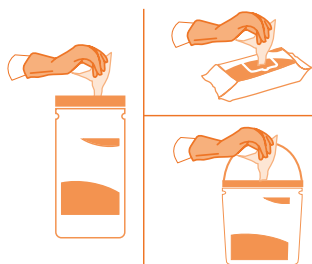
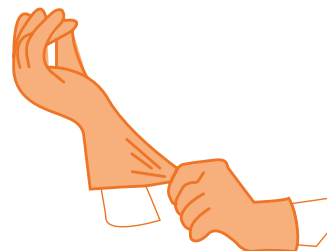


Scan for online factsheet
and safety data sheet

HOW TO USE:

STEP 1 | RISK ASSESSMENT

Please follow your agreed risk assessment policy guidelines regarding the use of PPE.



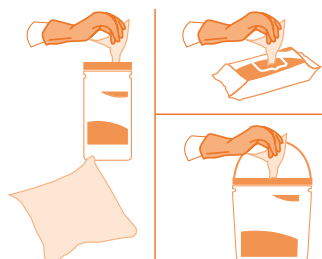
STEP 2 | WIPE SELECTION

Choose the dispenser type and dispense the wipe.

STEP 3 | S-SHAPE TECHNIQUE

Wipe the surface in an S Shape moving from clean to dirty. Use the wipe flat not scrunched.

Do not go over the same area twice with the same wipe.

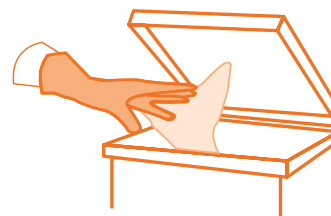


STEP 4 | FRESH WIPE

Use a fresh wipe if your wipe becomes soiled or dry.

STEP 5 | DISCARD

Discard used wipes in the appropriate waste bin following your local agreed guidelines.



Do not flush



STEP 6 | LET DRY

Allow the surface to dry before use.

TECHNICAL DETAILS

”

Our unique Sodium Hypochlorite formulation delivers the efficacy you need at a lower pH than comparable Peracetic Acid or Hydrogen Peroxide wipes (pH 8.5-10 compared to pH 12). This means the wipes are less corrosive on surfaces affected by higher Ph values.

The unique ready-to-use flow wrap packaging also creates less waste, requires less storage space and is more environmentally friendly to transport.

CHEMICAL FORMULATION

Medipal Chlorine Disinfectant Wipes are made with stabilised Sodium Hypochlorite NaClO. The extremely powerful chlorine based disinfectant solution has more than 1000 ppm chlorine and therefore exhibits broad spectrum anti microbial activity with a lower pH than many other chlorine products.

MATERIALS

Spunlace material is made by mechanically entangling fibres through the application of high pressure water jets. This gives the material a thick, soft and strong feel. The apertured texture gives the wipes a high liquid capacity which makes them suitable for wiping larger surfaces and the drape of the material gives a 'cloth-like' feel.

Efficacy details

Effective Against	Test	Kill Time
BACTERICIDAL		
Clostridium difficile	EN 16615	2 minutes
	EN 13704	2 minutes
Enterococcus hirae	EN 16615	1 minute
	EN 13727	1 minute
	EN 13697	2 minutes
	EN 1276	2 minutes
Escherichia coli	EN 13697	2 minutes
	EN 1276	2 minutes
Leptospira interrogans	EN 13727	1 minute
Pseudomonas aeruginosa	EN 16615	1 minute
	EN 13727	1 minute
	EN 13697	2 minutes
	EN 1276	2 minutes
Staphylococcus aureus	EN 16615	1 minute
	EN 13727	1 minute
	EN 13697	2 minutes
	EN 1276	2 minutes
MYCOBACTERICIDAL		
Mycobacterium avium	EN 14348	1 minute
Mycobacterium terrae	EN 14348	1 minute
SPORICIDAL		
Bacillus cereus	EN 13704	2 minutes
Bacillus subtilis	EN 13704	2 minutes
Clostridium sporogenes	EN 13704	2 minutes

Efficacy details

Effective Against	Test	Kill Time
VIRUCIDAL		
Adenovirus 5	EN 14476	1 minute
* These organisms represent Full Virucidal efficacy according to EN 14476 2013 + A1 2015 Annex A		
Murine norovirus	EN 14476	1 minute
* These organisms represent Full Virucidal efficacy according to EN 14476 2013 + A1 2015 Annex A		
Polio virus	EN 14476	1 minute
* These organisms represent Full Virucidal efficacy according to EN 14476 2013 + A1 2015 Annex A		
Coronavirus	EN 14476	1 minute
* These organisms represent envelope virus efficacy according to EN 14476 2013 + A1 2015 Annex A		
YEASTICIDAL AND FUNGICIDAL		
Aspergillus brasiliensis	EN 13624	2 minutes
Candida albicans	EN 16615	1 minute
	EN 13697	2 minutes
	EN 13624	2 minutes
Candida auris	EN 13624	1 minute



PRODUCTS WITHIN THIS RANGE

50 WIPE FLOW WRAP



Quantity:

50 per pack
12 packs per case

Product Code:

S570110MPCE