

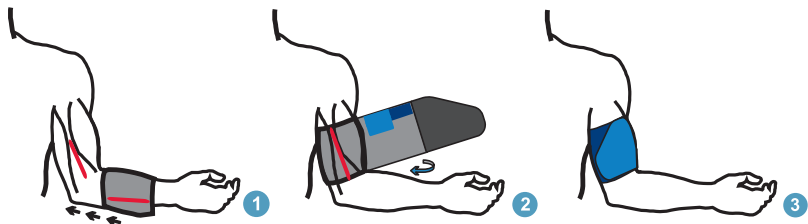


Welch Allyn ABPM 6100 Cuff
Instructions for Use

WelchAllyn[®]

Advancing Frontline Care[™]

Applying the Welch Allyn ABPM 6100 Cuff Illustrated Overview:



Cleaning Instructions:

The cuff may be cleaned with a mild disinfectant spray.

Or:

Remove the bladder from the cuff shell for machine washing.
Machine wash warm (50°- 140° F or 10°- 60° C). Line dry.



Step 1: Choosing the Cuff Size

Using an incorrect cuff size could result in erroneous and misleading blood pressure measurements.

To determine the correct cuff size for your patient, follow these simple steps:

- > To find the right sized cuff, wrap the cuff around the patient's upper arm without sliding the arm through the sleeve.
- > Use the color-coded RANGE indicator on the inside of the cuff and the bold INDEX marker to check that the arm circumference falls within the cuff range.
- > If the arm is within range, this cuff size is correct for your patient. If the measurement is outside the RANGE indicator, select a new cuff size as indicated by color.



Step 2: Applying the Cuff

- > To apply the Welch Allyn ABPM 6100 cuff, simply slide the sleeve up the patient's arm, ensuring the color size indicator is at the top of the cuff. The cuff should be midway between the elbow and shoulder.
- > Be sure the ARTERY indicator is over the patient's brachial artery, between the biceps and triceps muscles (see illustration showing left arm placement).
- > Wrap the cuff snugly around the patient's upper arm.
- > Take the initial BP reading and ensure hookup is working.

Refer to figures 1, 2 and 3 on inside flap for an illustrated overview.



Step 3: Prepare the Patient

Preparing the patient is the most important step in obtaining an accurate, reliable blood pressure measurement.

Review the following instructions with your patient:

- > Avoid excess movement during readings
- > Relax the instrumented hand, slightly away from the body
- > Avoid hand movement
- > Avoid flexing muscles during the reading
- > Do not remove the cuff between readings

Ambulatory Blood Pressure Monitoring 6100 Cuffs

Description	Range	Part Number
Small Adult	18-27 cm	101340
Adult	25-35 cm	101341
Adult Plus	33-40 cm	101342
Large Adult	39-46 cm	101343

4341 State Street Road
PO Box 220
Skaneateles Falls, NY 13153
(p) 800.535.6663 opt 3
(f) 315.685.2174
www.welchallyn.com

WelchAllyn[®]

Advancing Frontline Care[™]